

Biodiversity Series

Research focal areas and initiatives



Stakeholder engagement

Center activities connecting communities and institutions from local to global scale.

Wednesday, Mar. 21, 2018 ■ 12-1 p.m. ■ LSC 202



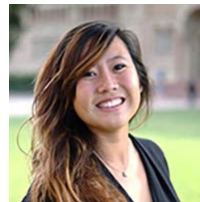
Beth Polidoro

Assistant Professor,
School of Mathematical and
Natural Sciences;
Deputy Director, Center for
Biodiversity Outcomes

Biodiversity evidence, metrics and monitoring

Finding evidence from what works in conservation.

Wednesday, Apr. 4, 2018 ■ 12-1 p.m. ■ Wrigley 401



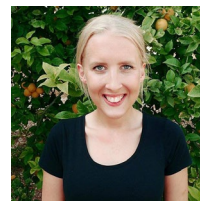
Samantha Cheng

Assistant Professor,
School of Life Sciences;
Associate Director of
Conservation Evidence, Center
for Biodiversity Outcomes

Decision science

Tools and scenario monitoring for achieving the United Nation's Sustainable Development Goals.

Wednesday, Apr. 18, 2018 ■ 12-1 p.m. ■ Wrigley 401



Krista Kempinen

ASU-Conservation International
Postdoctoral Fellow, Center for
Biodiversity Outcomes

Light refreshments will be served

RSVP at <http://bit.ly/2oJLxuF>