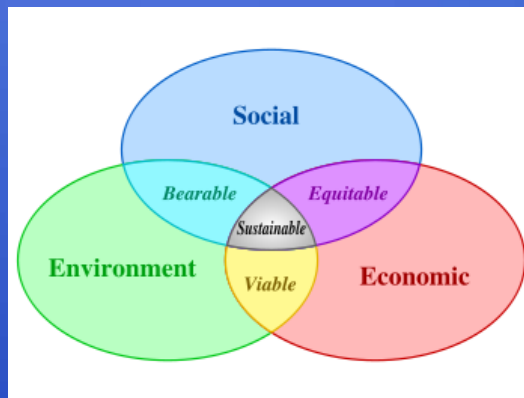


US EPA Region 9

A Catalyst for Sustainability

Working Differently for Environmental Protection



Geographic Coverage of Region 9



Our Sustainability Work

- Priorities
 - Livability
 - Energy
 - Materials/Products
 - Green Business
 - Water
 - Environmental Justice
- Working Differently
- Working Together



What Can EPA Do?

- Technical Support
- Best Practices
- Convene Key Partners
- Collaboration
- Networking
- Customer Focused – “One EPA”
- Recognition
- Regulate
- And yes.....Funding



“Livability”

- HUD/DOT/EPA Partnership
- Smart Growth
- Brownfields
- Community Action for a Renewed Environment (CARE)
- Green Building – Healthy Homes/Schools
- Home Energy Retrofits

THE FEDERAL PARTNERSHIP FOR SUSTAINABLE COMMUNITIES

<http://www.epa.gov/sustainability>



HUD

DOT

EPA

Six Partnership Principles



Provide more **transportation choices**



Expand location- and energy-efficient **housing choices**



Improve **economic competitiveness** of neighborhoods by giving people reliable access to employment centers, educational opportunities, and other basic services.



Target Federal funding toward **existing communities** – through transit-oriented development and place-based policies



Align federal policies and funding to remove barriers to collaboration, leverage funding and increase the effectiveness of existing programs.



Enhance the **unique characteristics** of all communities, whether rural, suburban or urban.

Federal Funding Opportunities

Agency	Priority Topics for Funding	Examples of Grants	Links
HUD	Sustainable, Livable Communities	<ul style="list-style-type: none"> - Community Challenge Planning - Choice Neighborhoods 	www.hud.gov/offices/pih/grants/index.cfm
DOT	Livability & Transportation Choices	<ul style="list-style-type: none"> - TIGER II Planning 	www.dot.gov/recovery/ost/tigerii/
DOE	Energy Efficiency & Renewable Energy	<ul style="list-style-type: none"> - Energy Efficiency & Conservation Block - Weatherization Assistance 	www1.eere.energy.gov/wip/eeecbg.html
EPA	Environmental Protection	<ul style="list-style-type: none"> - Climate Showcase - Brownfields Assessment & Cleanup - Clean Water State Revolving Funds (state-managed) 	www.epa.gov/region9/climatechange/grants.html www.epa.gov/brownfields/grant_info/index.htm www.epa.gov/region9/water/grants/index.html
DOC	Economic Revitalization	<ul style="list-style-type: none"> - Global Change Mitigation Incentive - Triple Bottom Line Accounting Competition 	www.eda.gov/InvestmentsGrants/FFON.xml

EPA Support

- Bringing together key federal partners
- Smart Growth Tech Support
<http://www.epa.gov/smartgrowth/>
- Brownfields – new area-wide planning grants (Phoenix in first pilots) <http://epa.gov/brownfields/>
- CARE Grants - reducing toxics in communities (Tucson, Inter Tribal Council) <http://www.epa.gov/CARE/>



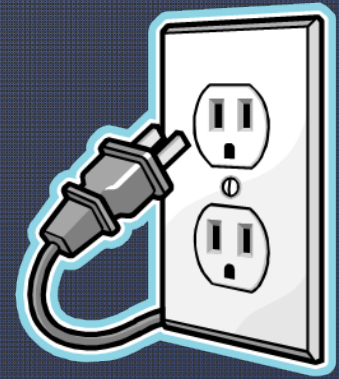
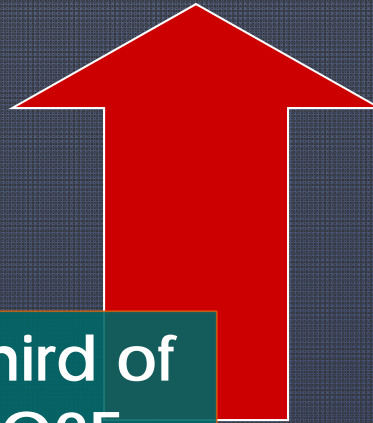
U.S. Building Impacts

Asthma and other indoor
air health impacts

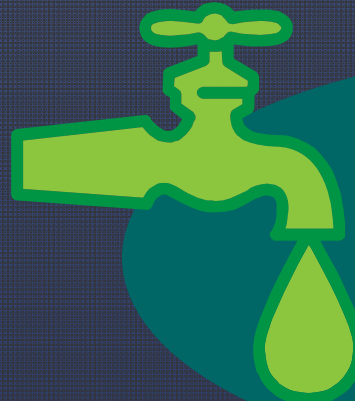


Over 100 million
tons/year building-
related construction
material disposed

A third of
CO₂E
emissions



68% of electricity
consumption



12% of potable
water consumption

EPA Support



- Supporting home energy retrofit programs

http://www.energystar.gov/index.cfm?fuseaction=hpwes_profiles.showSplash

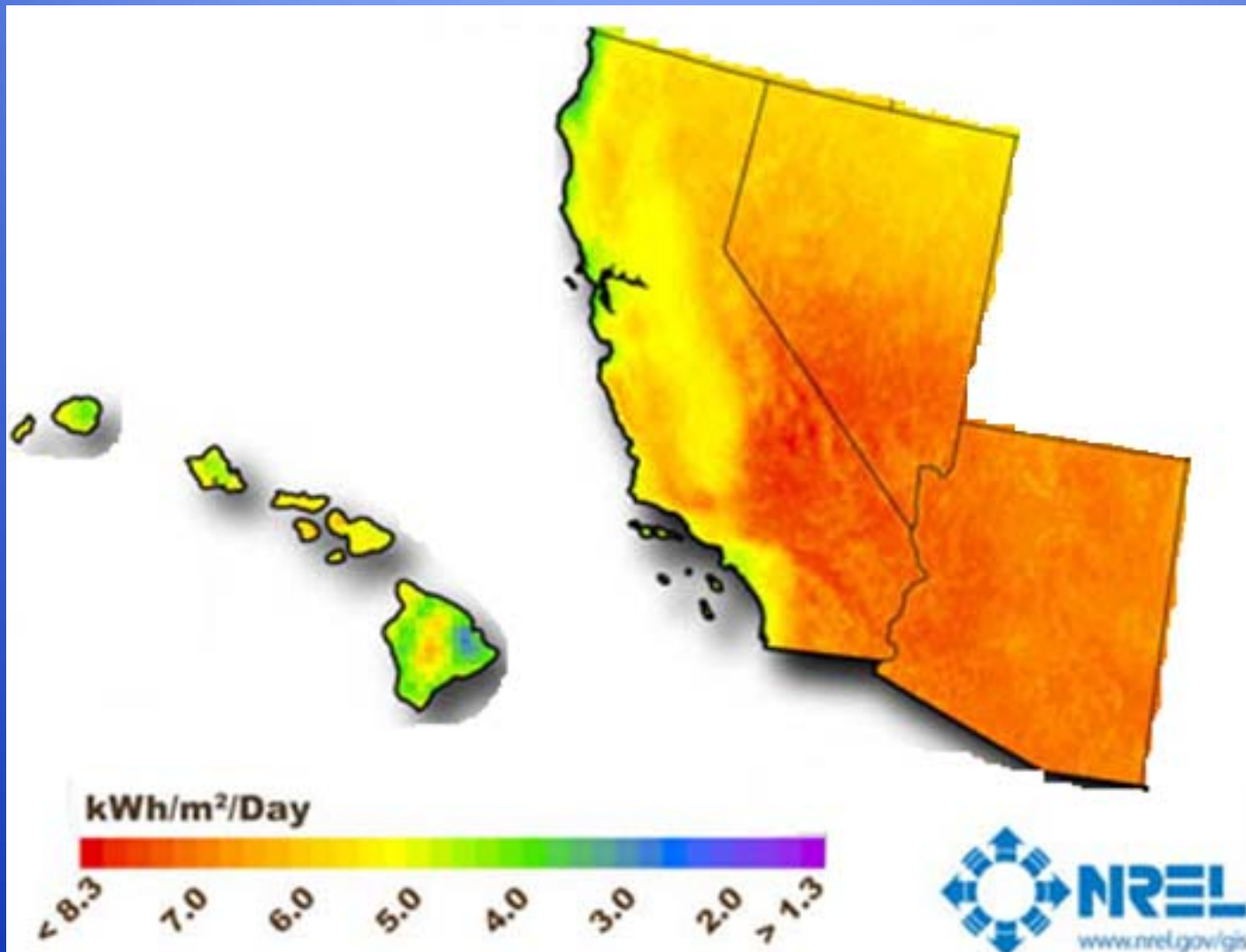
- Advancing local Green Building construction standards (tribal pilots)

<http://www.epa.gov/greenbuilding/>

- Improving Indoor Air Quality
- Healthy School Environments Assessment Tool (HealthySEAT)

<http://www.epa.gov/schools/healthyseat/>

Promoting Environmentally Sound Renewable Energy Projects



This map was produced by the National Renewable Energy Laboratory for the U.S. Department of Energy.

Green Power Communities

- An EPA partnership program that challenges communities to buy green power in an amount that collectively meets the Partnership's green power use benchmarks.
- **Green Power Communities Challenge** -- EPA is hosting a national yearlong campaign to encourage local governments to use renewable energy and fight climate change.

Contact for information: Allison Dennis. dennis.allison@epa.gov (202) 343-9526

<http://www.epa.gov/greenpower/communities/gpcchallenge.htm>



EPA Support

- Green Power Partnership
<http://www.epa.gov/greenpower/index.htm>
- RE Powering America – renewables on contaminated lands & brownfields
<http://www.epa.gov/renewableenergyland/index.htm>
- Partnering with DOE/NREL
http://www.nrel.gov/applying_technologies/state_local.html
- NEPA review role

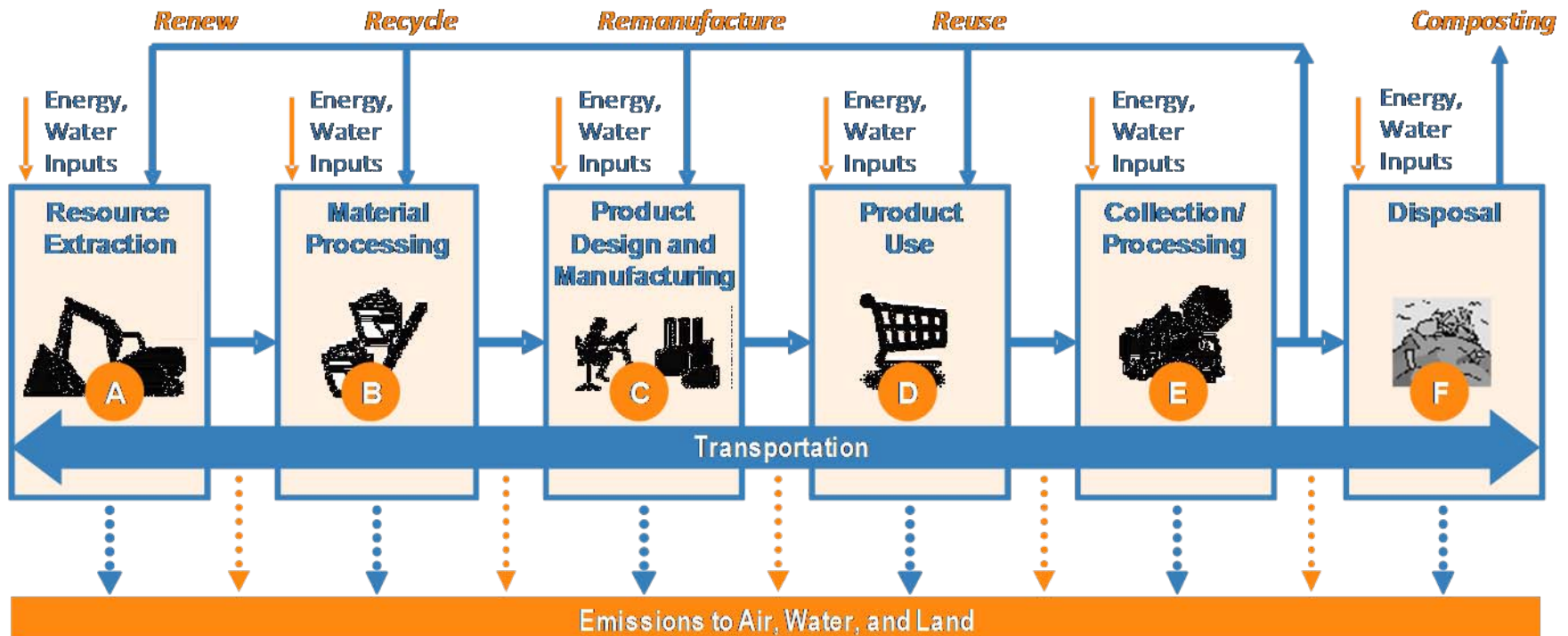


Materials & Products

- Expanding Recycling
Managing Organics
- Shifting from Waste to
Materials Management
- Buying Green –
Environmentally
Preferable Purchasing



Sustainable Materials Management Lifecycle Thinking for Biggest Environmental Results

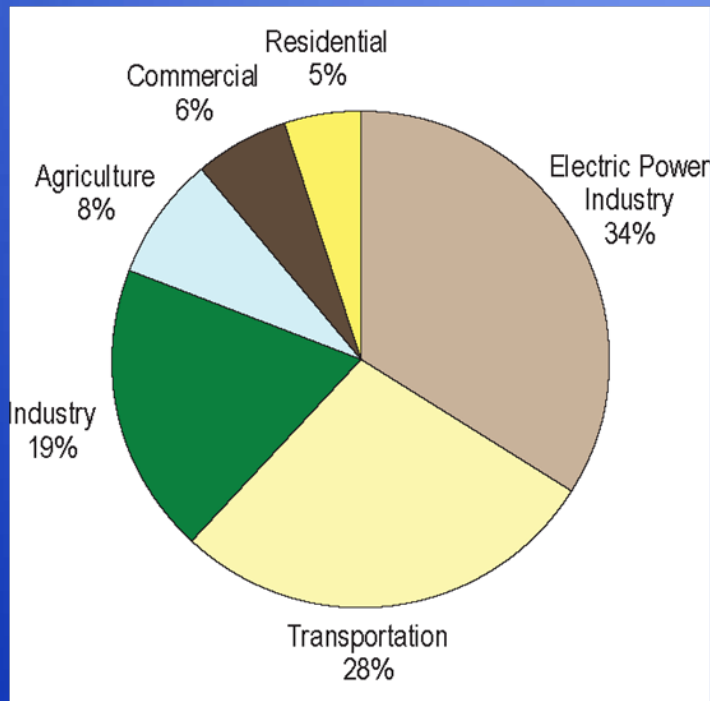


Climate Change

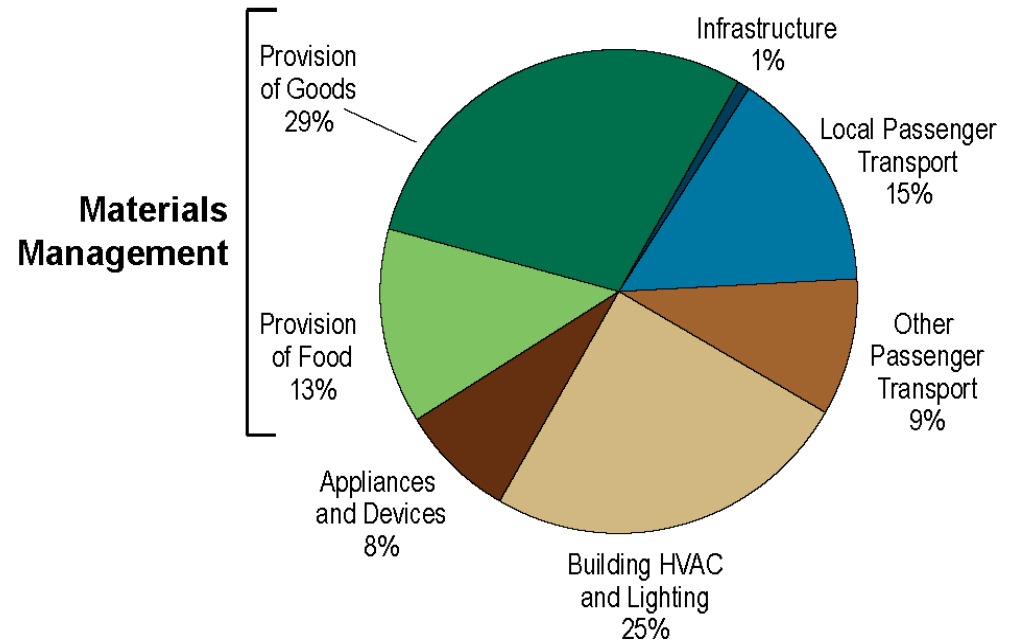
Lessons from a Systems View

http://www.epa.gov/oswer/docs/ghg_land_and_materials_management.pdf

Sector-Based



Systems-Based



EPA Support



- Pay-As-You Throw support to increase recycling
<http://www.epa.gov/epawaste/conserve/tools/payt/index.htm>
- Composting and Anaerobic Digestion of Organics
<http://www.epa.gov/region9/organics/>
- Toolkit for connecting recycling to climate action plans
<http://captoolkit.wikispaces.com/>
- Advancing Construction and Demolition Debris Reuse
- Green Road Construction Practices

Buying Green

Electronic Product Environmental
Assessment Tool - <http://epeat.net/>

Green Standards for Electronics



- **Reductions Achieved**
4.4 MMTCO2E
4,290 metric tons
toxics

Up Next



Greener Business

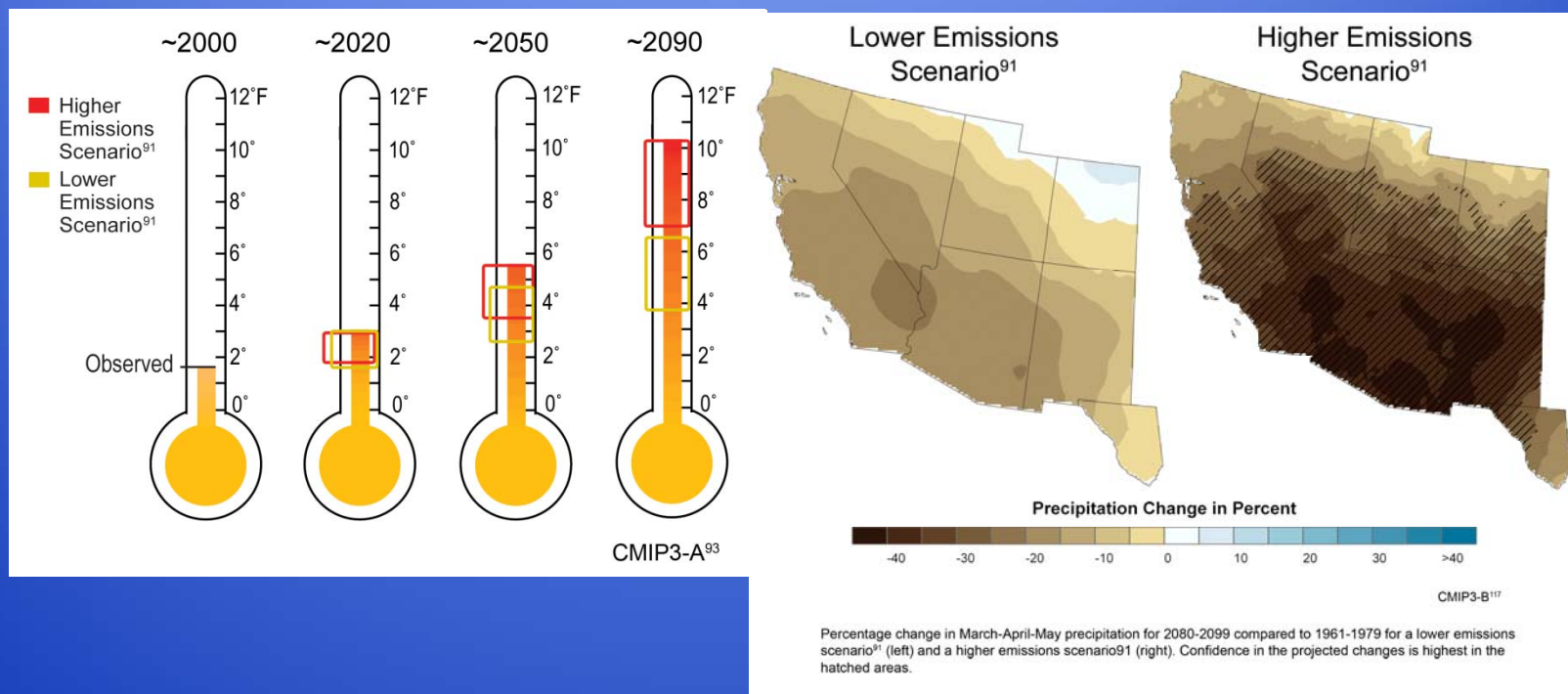
Hospitality Sector



Water – Climate Change Impacts to Precipitation in the Southwest



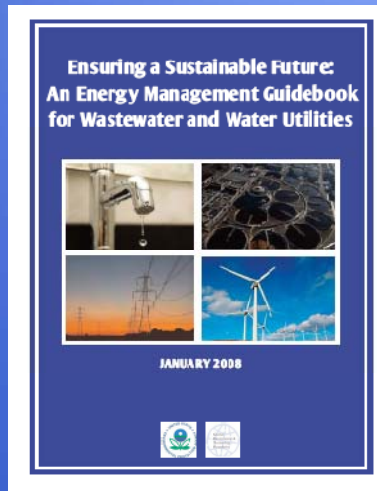
United States
Global Change
Research Program



<http://globalchange.gov/>

EPA Support

Sustainable Water Infrastructure



- Saving Energy and Water at Water and Waste Water Treatment Plants
<http://www.epa.gov/region9/waterinfrastructure/>
- Technical Assistance
- Best Practice Toolkits
- Funding (State Revolving Fund)

Water Conservation

AZ leadership

<http://www.epa.gov/WaterSense/>



Climate Change Adaptation Planning

Environmental Justice

- Addressing the Equity pillar of Sustainability
 - Equal Access
 - Equal Protection
 - Involvement



Working Differently

- Customer Focus
- Multimedia
- Tailored Partnerships
- Leveraging resources



Example

Home Energy Retrofits

- Launching Home Energy Retrofit Program in Nevada
- Partner with Reno, Washoe County, UNR
- Making a Difference
 - Provide best practices & guidance
 - Leverage EPA Air funding
 - Support Local Workshop with technical experts - garners interest from key stakeholders
 - Raise awareness of funding opportunities
- Result - Nevada's Energy Office applied for and received a \$5 million DOE competitive grant to set up a home energy retrofit program in Reno and Las Vegas

Example

Renewable Energy

- Advancing renewable energy on contaminated lands in Richmond, CA
- Partner with DOE's National Renewable Energy Laboratory (NREL) & City of Richmond
- Making a Difference
 - Screening tool to prioritize best renewable power opportunities
 - Tool transferable to other cities
 - Wastewater energy audit
 - Potential renewable energy project at wastewater treatment plant

Example

Asthma Intervention

- Combined programs to retrofit homes with indoor air quality intervention in Fresno, CA
- Partner with HUD, local housing and health agencies
- Making a Difference
 - Target households with asthmatics
 - Brings related efforts together for first time
 - Leverages complementary local resources
 - Develop model protocol for use by other cities

Working Together To Advance Sustainability

- Getting Started on an EPA – ASU Sustainable Cities Network Partnership

Tom Huetteman – 415-972-3751

Karen Irwin – 415-947-4116

