



## GREENING LOWER GRAND AVENUE – COMMUNITY DESIGN WORKSHOP – DAY THREE



# RECAP

- Last night of the workshop....But not the end of this planning effort
- Tonight (3<sup>rd</sup> night):
  - View and comment on refined designs



# RECAP

- First night
  - Met with community members
  - Reviewed site conditions, existing plans
  - Reviewed tools and techniques for sustainability
- Broke into tables and created own plans for Grand Ave.





# RECAP

- Last (second) night:
  - Open House
  - Reviewed and commented on seven options for street design/discussed policies



# GOALS



**MOBILITY**



**ECONOMY**



**COMMUNITY/CULTURE/DESIGN**



**SUSTAINABILITY**

# MOBILITY

- Accommodate all users
- Maintain curb lines for stormwater infrastructure
- Understand lane reduction impacts on commuters
- Link decisions to discussions I-10 & US-60
- Improve sidewalk environment
- Create crosswalks
- Create bike lanes
- Develop parking strategy for now and future

# ECONOMY

- Make Lower Grand Avenue a destination
- Establish a Vision/Brand
- Enhance safety
- Support existing and future businesses
- Clean up vacant properties
- Rehabilitate and tenant vacant buildings
- Install fundamentals:
  - Parking
  - Lighting
  - Signs
  - Shade
  - Grand Avenue-specific features (painting crosswalk, art, landscaping)

# COMMUNITY/CULTURE/DESIGN

- Create a more human scale street with special places
- Maintain historic street alignment
- Conserve historic buildings
- Work closely with private property owners
- Provide better lighting for safety and community identity
- Support and provide opportunities for public & private art
- Locate community-gathering spaces at key locations and/or temporarily close streets for events



# SUSTAINABILITY

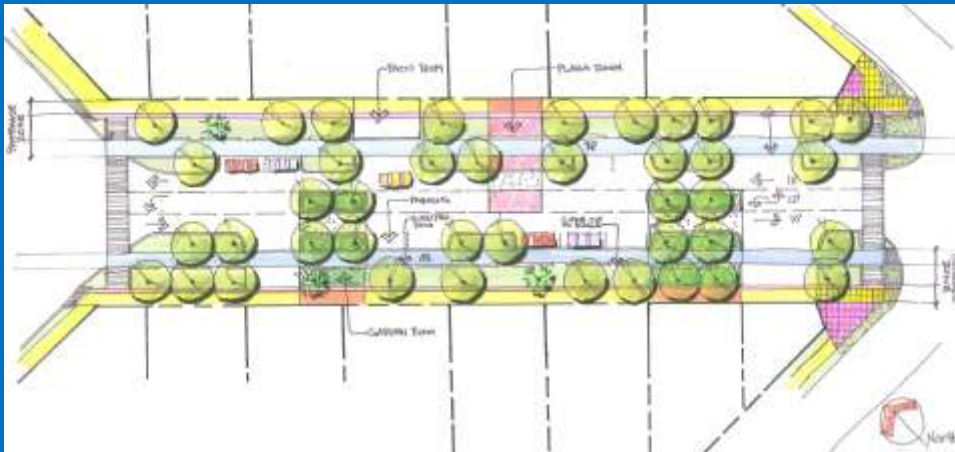
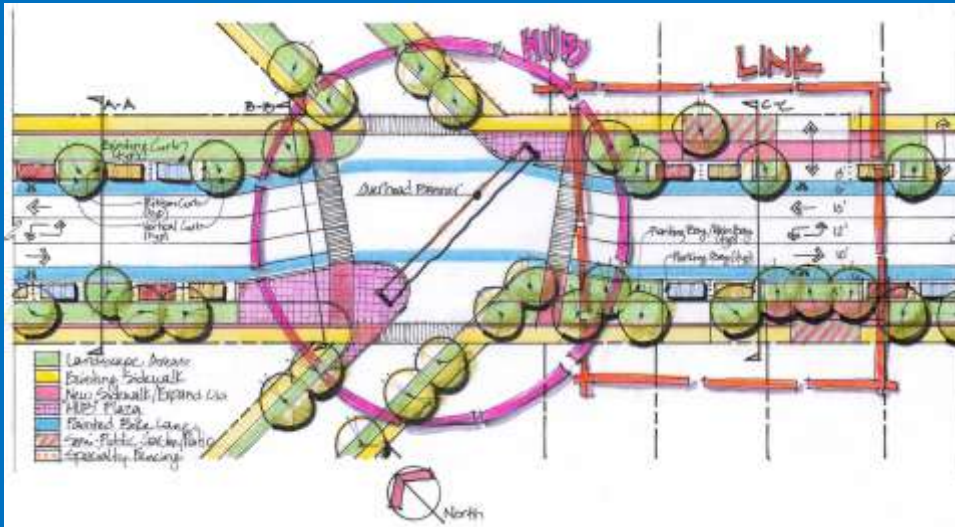
- Stormwater – use curb cuts, permeable pavement, and water harvesting for water management and conservation
- Heat Island – use landscaping and paint to manage impact of asphalt
- Landscaping – consider maintenance needs and water needs, climate-appropriate plants
- Air Quality – consider existing air quality concerns and impacts of design changes (traffic speed, etc.)
- Alternative energy – options for photovoltaics to power street lights
- Create opportunities for urban gardens in vacant lots (Mayor's initiative)

# DESIGN CONCEPTS

HUBS + LINKS



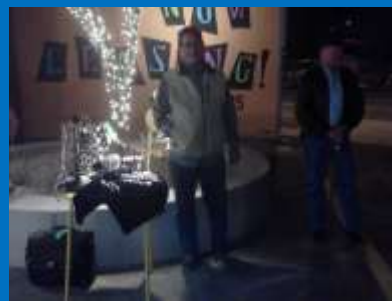
GRAND  
ROOMS



# DESIGN ELEMENTS



ROADWAY  
CHARACTER  
(LINKS)



GATHERING  
PLACES  
(ROOMS)



GATEWAYS/  
CROSSINGS  
(HUBS)

# ROADWAY CHARACTER (LINKS)

3-lanes with bike lanes and parking on both sides

Permeable  
surface bike  
Lanes

Permeable  
surface on-  
street parking

Enhanced Crosswalks

Center turn lane

Water harvesting  
In parking lanes and  
landscape – some  
Areas personalized

Outdoor Rooms

Art inspired mid-  
Block Crossing

Bulb-outs used to  
Reduce runoff, create  
Community plazas and  
Reduce roadway crossing  
distance



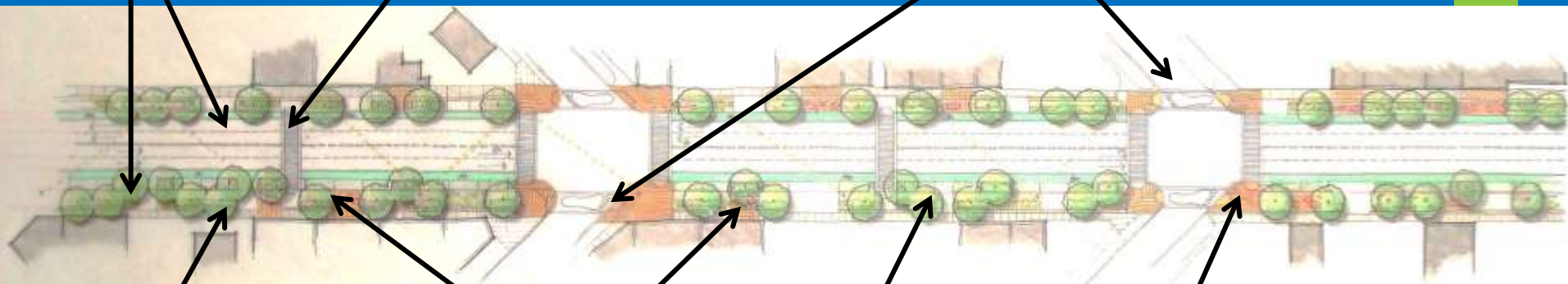
# ROADWAY CHARACTER (LINKS)

4-lanes with bike lanes and parking on south side

Permeable  
surface bike  
Lanes

Mid-block crossings

Art inspired enhanced Crosswalks



Water harvesting  
In parking lanes and  
landscape – some  
Areas personalized

Outdoor Rooms

Permeable  
surface on-  
street  
parking

Bulb-outs used to  
Reduce runoff, create  
Community plazas and  
Reduce roadway crossing  
distance

# ROADWAY CHARACTER (LINKS)



# ROADWAY CHARACTER (ROOMS)





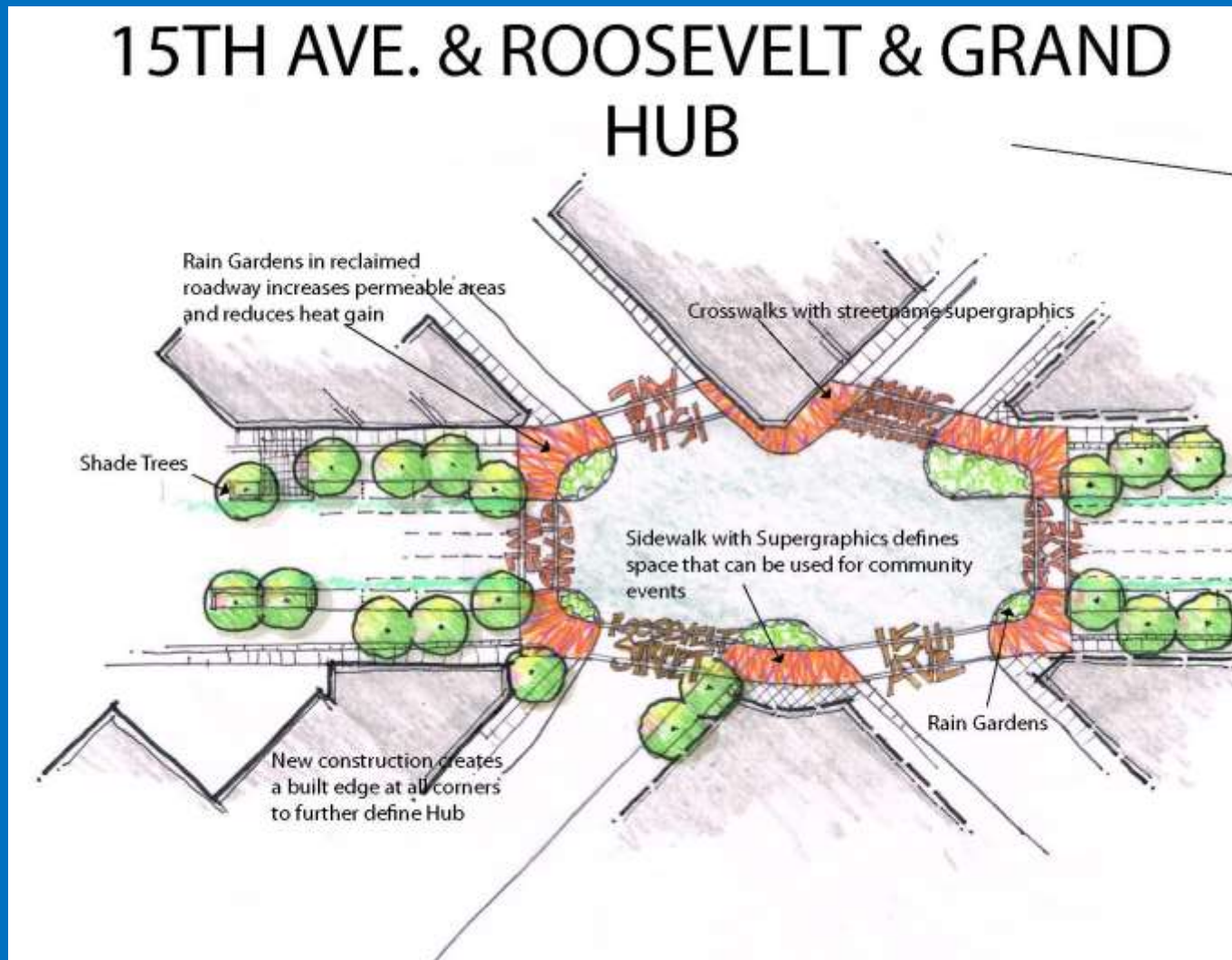
# ROADWAY CHARACTER (HUBS)





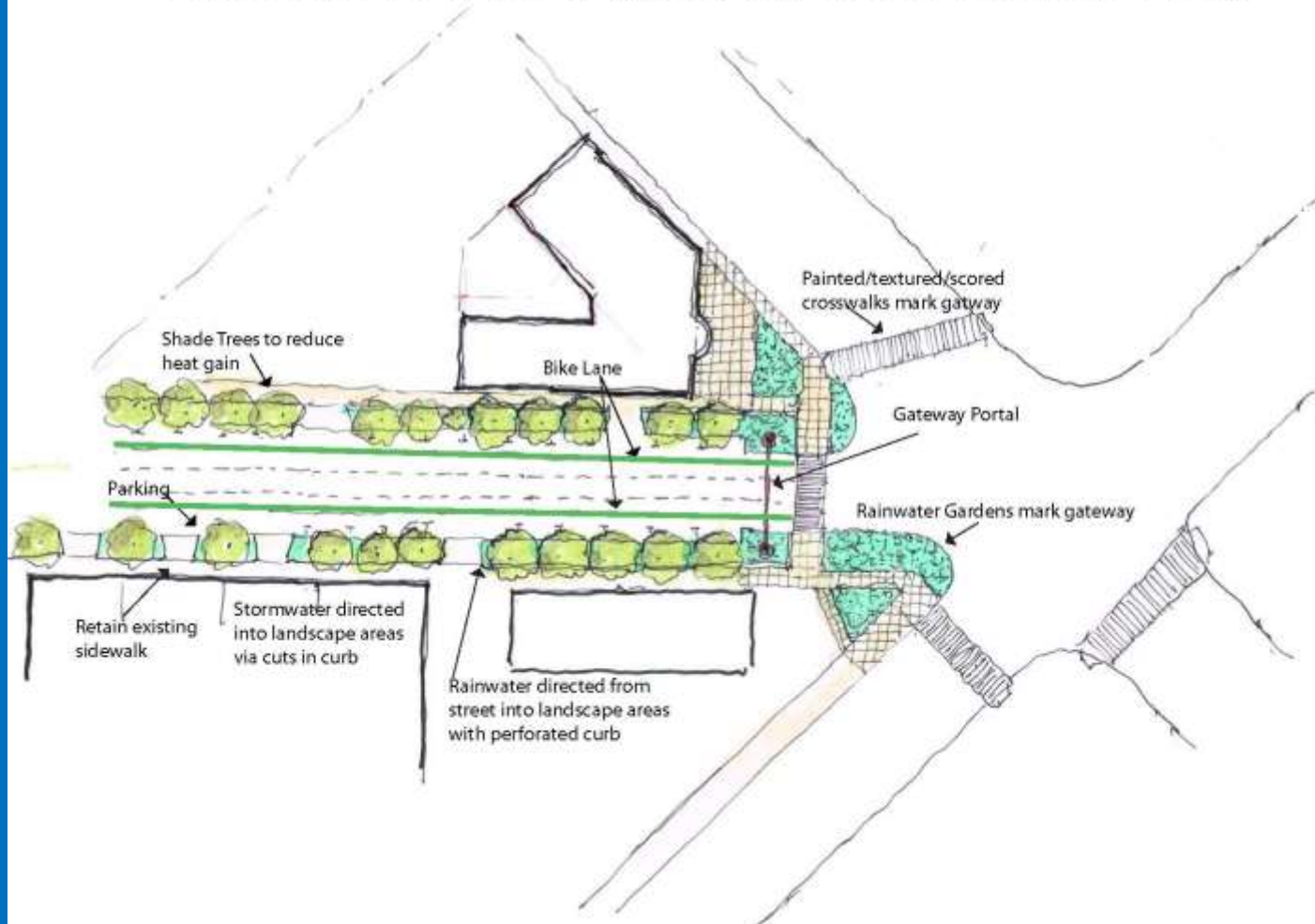
# ROADWAY CHARACTER (HUBS)

## 15TH AVE. & ROOSEVELT & GRAND HUB

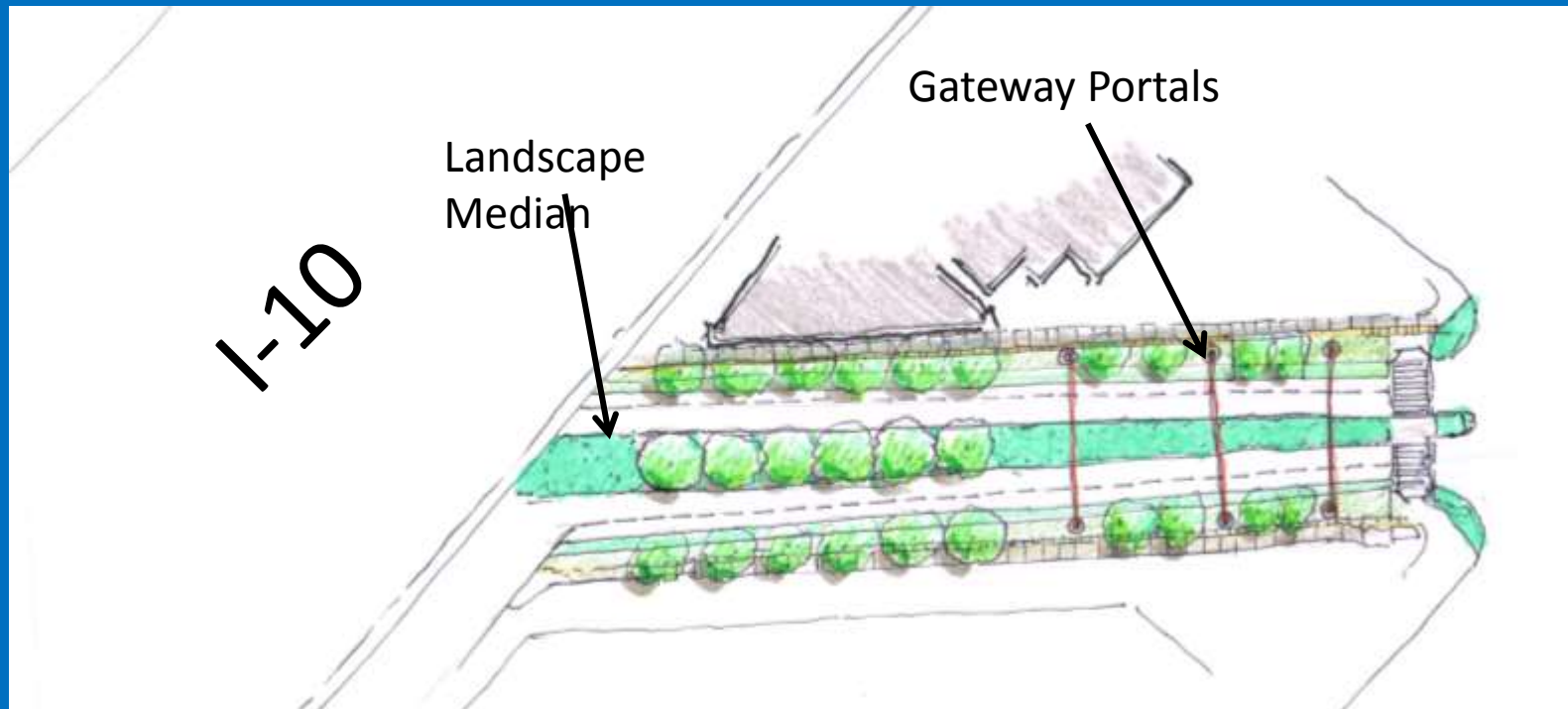


# ROADWAY CHARACTER (GATEWAY)

## Grand & 7th Aves & Van Buren St.



# ROADWAY CHARACTER (GATEWAY)



# NEXT STEPS:

- Near term actions:
  - Re-stripping lanes
  - Permanent parking
  - Fences
  - Events
  - Property owner landscape solutions
- Long term policy and programmatic...



# POLICY AND PROGRAMS:

- City and property owners test collaborative solutions for Lower Grand Avenue:
  - Maintenance
  - Roadway standards
  - Landscaping
  - Water harvesting
  - Materials and surfaces
- Inter-agency and inter-jurisdictional focus on Lower Grand Avenue
- Continue to fuel existing energy from GAMA and neighborhood