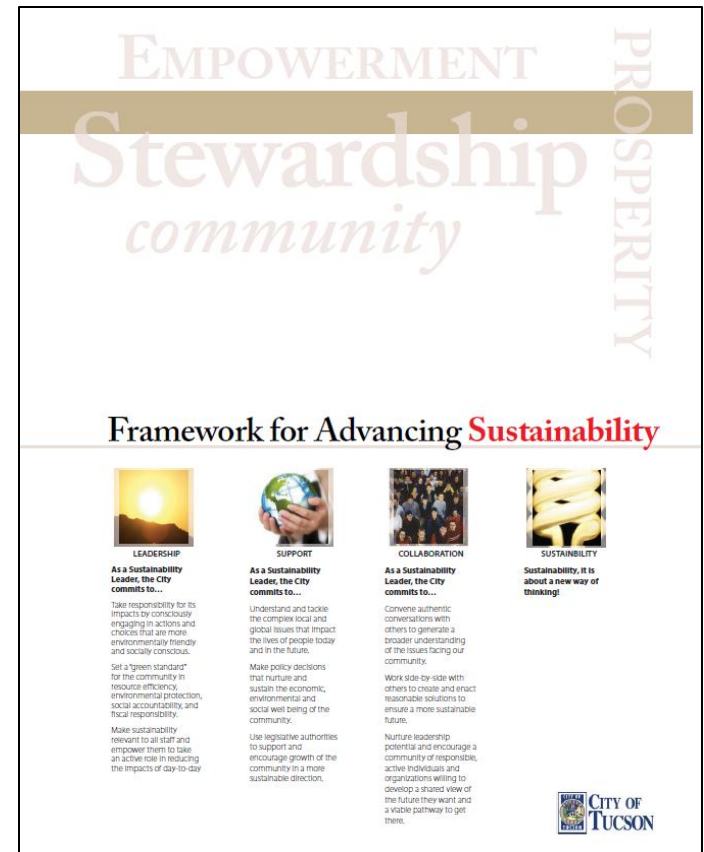


Tucson's STAR Experience: the Rating versus the Framework

STAR as a Framework

- * 2008 Framework for Advancing Sustainability
 - * All environmental
 - * Based on existing policy
- * 2012 mandate to update Framework
 - * Grant competitiveness
- * Sustainability Framework = Local values + STAR
 - * In our own words
 - * Too many objectives
 - * Needed to add elements
 - * It IS a pilot...





Updated Sustainability Goals

- * City's Personal Safety: Government and empowered residents collaborate to reduce and prevent crime and violence, foster pro-social behaviors such as non-violent conflict resolution, and promote a sense of personal safety in all aspects of daily life
- * Original STAR Safe Communities: Create safe, peaceful and thriving communities where all government sectors actively collaborate with each other and with residents as empowered partners to foster pro-social behaviors, prevent and reduce crime and violence, and promote non-violent conflict resolution
- * Final STAR Safe Communities: Prevent and reduce violent crime and increase perceptions of safety through interagency collaboration and with residents as empowered partners



Updated Sustainability Goals

- * City's Compact, Complete, and Context Sensitive Communities: Development is concentrated in compact, human-scaled, walkable centers and neighborhoods that: connect to transit, offer diverse uses and services, provide housing options for families of all income levels, and minimize the indirect impacts of the built environment on the integrity of ecological systems, dark skies, water consumption, and public health
- * STAR Compact and Complete Communities: Concentrate development in compact, human-scaled, walkable centers and neighborhoods that connect to transit, offer diverse uses and services, and provide housing options for families of all income levels
- * STAR Ambient Noise and Light: Minimize and manage ambient noise and light levels to protect public health and the integrity of ecological systems



Updated Sustainability Goals

- * City's Food Systems: There is a collaborative network that integrates sustainable food production, processing, distribution, consumption, and waste management in order to create a locally based, self-reliant food economy where all people, at all times, have physical and economic access to sufficient, safe, and nutritious food to meet their dietary needs and food preferences
- * STAR Food and Nutrition: Ensure that adults and children of all income levels have opportunities to learn about nutritious eating and have physical and economic access to fresh, healthful food

Updated Sustainability Goals

- * City's Carbon Neutral City: Community carbon neutrality is reached through reducing, to the extent possible, the amount of greenhouse gases emitted, and addressing the remainder of those emissions through carbon offsets, while promoting economic vitality and protecting human health
- * STAR Greenhouse Gas Mitigation: Achieve greenhouse gas emissions reductions throughout the community





Updated Sustainability Goals

- * City's Water Efficiency: Significant and sustained reductions in community-wide potable water use are achieved, and the capture of rainwater and storm water and the reuse of gray water and reclaimed water are used to offset potable water use to the extent possible
- * STAR Industrial Sector Resource Efficiency: Minimize resource use and demand in the industrial sector as a means to mitigate greenhouse gas emissions and conserve water
- * STAR Resource Efficient Buildings: Improve the energy and water efficiency of the community's residential, commercial and institutional building stock



Updated Sustainability Goals

- * A Centered City: This is a centered city with a vibrant downtown and urban core that: is an appealing and valued community asset; embodies the City's economic heart and cultural soul; represents a shared community vision; acts as a lodestone attracting residents and visitors alike; reflects genuine partnership and coordination between municipal, business, non-profit, and neighborhoods; and is supported by appealing gateways and corridors that connect with other major activity centers
- * Technological Innovation and Investment: The advanced training and higher education community catalyzes economic growth through technological research and development; technology transfer and sharing of cost and risk of investments in innovation; development of intellectual capital and entrepreneurial spirit; and preparation of local workers with the skills needed for innovation

Timing is Everything...

- * Why have 2 separate plans?
- * Isn't community sustainability what the General Plan is about?
- * Consistent with new open government initiative, restructuring
- * Amazing amount of consistency
- * Reality check





EJ- I: Business Retention & Development

(20 available points)

Purpose

Foster economic prosperity and stability by retaining and expanding businesses with support from the business community

Evaluation Measures

Community Level Outcomes

Outcome 1: Businesses

Option A: Demonstrate an increased number of business establishments in the county over time

--OR--

Option B: Demonstrate an increased number of business establishments in the municipality in the past 3 years

Outcome 2: Annual Sales

Demonstrate an increase in annual sales from businesses located in the jurisdiction in the past 3 years

Outcome 3: Employment

Part 1: Demonstrate an increase in the percentage of residents employed over time

--AND--

Part 2: Demonstrate a decrease in the unemployment rate of residents over time

Local Actions

1. Negotiate project labor agreements, community benefit agreements, and local hiring agreements
2. Formally engage with the business community on a regular basis to improve conditions and address specific needs
3. Appoint an advisory body to provide recommendations and represent the business community in local decision-making

How We Connected the Dots...

STAR:

- * Purpose Statements →

- * Outcomes →

- * Actions →

Plan Tucson:

- * Long-Term Community Sustainability Outcomes

- * Progress Metrics

- * Used as a policy screen, will be used as ideas for action plans

THE BUILT ENVIRONMENT

Plan Tucson Goals	Plan Tucson Policies	STAR Sustainability Metrics	Long-term Community Sustainability Outcomes
HOUSING			
The City strives for a mix of well-maintained, energy-efficient housing options with multi-modal access to basic goods & services, recognizing the important role of homeownership to neighborhood stability.	H1, H4, H7, H10		
PUBLIC SAFETY			
The City strives for a safe community and secure neighborhoods.	PS1, PS6, PS1, PR7		
	PS2, PS9		
PARKS & RECREATION			
The City strives for a community that is healthy physically, mentally, economically, and environmentally.	PR1, PR4, PR5, PR1, BC4, TQ1		
ARTS & CULTURE			
The City strives for a community whose economic stability and sense of place reflects its commitment to arts and culture and its care for the natural environment.	AC, AC, AC, AC, BC, BC, TQ1		
PUBLIC HEALTH			
The City strives for a community that is healthy physically, mentally, economically, and environmentally.	PH, PH1		
Plan Tucson Goals	Plan Tucson Policies	STAR Sustainability Metrics	Long-term Community Sustainability Outcomes
HISTORIC PRESERVATION			
The City strives for community that respects and integrates historic resources into the built environment and uses them for the advancement of multiple community goals.	HP1, HP2, HP3, HP4, HP5, HP6, HP7, HP8, H4, H5, PR8, E7, LT1, TQ4, P17	Number of historic districts; annual number of eligible structures and sites designated, rehabilitated, or converted through adaptive reuse; annual number of historic structures retrofitted or with energy efficiency or clean energy technologies	Historic buildings, structures, sites, neighborhood districts and cultural landscapes are preserved and reused; enabling retention of local, regional, and national history and heritage, reinforcement of community character, and resource conservation.
PUBLIC INFRASTRUCTURE & FACILITIES, AND COST OF DEVELOPMENT			
The City strives for well-maintained public facilities and infrastructure that support coordinated cost-effective service delivery for current and future residents.	P11, P15, P16, P17EQ3, EQ7, WR10, RR5, RR6, PR3, E3, AC4, RR3, PH2, PH3, AG3	Access of residents of diverse income levels and race/ethnicity to community facilities, services, and infrastructure; clean-up of contaminated sites	Public services, benefits, and infrastructure developments are provided fairly across the community, all residents are provided protection from environmental and health hazards, and past disinvestment and disproportionate exposures to hazards are redressed.
The City strives for strategic public and private investments for long-term economic, social, and environmental sustainability.			
REDEVELOPMENT & REVITALIZATION			
The City strives for an urban form that conserves natural resources, improves and builds on existing public infrastructure and facilities, and provides an interconnected multi-modal transportation system to enhance the mobility of people and goods.	RR1, RR2, RR3, RR4, RR5, RR6, P12, LT19, BC8, RG4, WR10	Percentage of new development in locally-designated infill and redevelopment areas; percentage of new housing units that utilized existing water and sewer mains and did not require extending or widening public roadways	New growth is focused in infill and redevelopment areas that do not require the extension of water, sewer, and road infrastructure or facilitate sprawl; emphasizing land use patterns that improve community health and safety, increase equity, enhance environmental quality, and provide economic benefits.
LAND USE, TRANSPORTATION, & URBAN DESIGN			
The City strives for an urban form that conserves natural resources, improves and builds on existing public infrastructure and facilities, and provides an interconnected multi-modal transportation system to enhance the mobility of people and goods.	LT1, LT3, LT4, LT5, LT6, LT7, LT8, LT9, LT10, LT11, LT18, LT19, LT20, LT21, LT23, LT24, LT25, LT26, LT27, LT28, E6, EQ4, EQ5, PH1, HP7, BC8	Percentage of housing within ¼-mile or ½-mile walk distance of transit stops; residential housing density in urban core; employment density; diversity of land uses; transit availability; walkability; urban design standards for density (e.g., setbacks); daytime ambient noise levels; amount of light glare and/or light trespass; visibility of stars	Development is concentrated in compact, human-scaled, walkable centers and neighborhoods that: connect to transit, offer diverse uses and services, provide housing options for families of all income levels, and minimize the indirect impacts of the built environment on the integrity of ecological systems, dark skies, water consumption, and public health.
	LT1, LT3, LT4, LT9, LT11, LT12, LT13, LT14, LT15, LT16, LT22, LT25, ED5, PR9, PH1, PH4, PH8, E7, RG3	Mode split; percent of income spent on transportation costs; pedestrian and bicyclist fatalities; vehicle miles traveled	Safe, affordable, diverse, and efficient mobility options are accessible to all residents, with emphasis on walking, bicycling, and mass transit to reduce vehicle miles traveled.
Plan Tucson Goals	Plan Tucson Policies	STAR Sustainability Metrics	Long-term Community Sustainability Outcomes
ENERGY & CLIMATE READINESS			
The City strives for a reduction in the community's carbon footprint and greater energy independence.	EC1, EC5, EQ7, LT9, LT14		
	EC4, LT11, LT13, LT15, LT17		
The City strives for a reputation as a national leader in the development and use of locally renewable energy technologies, water conservation, waste diversion and recovery, and other emerging environmentally-sensitive industries.	EC4, EC7		
The City strives for sound, efficient, ecological policies and practices in government and in the private sector.			
The City strives for a reputation as a national leader in the development and use of locally renewable energy technologies, water conservation, waste diversion and recovery, and other emerging environmentally-sensitive industries.	EC1, WR3		
The City strives for sound, efficient, ecological policies and practices in government and in the private sector.			
Plan Tucson Goals	Plan Tucson Policies	STAR Sustainability Metrics	Long-term Community Sustainability Outcomes
JOB & WORKFORCE DEVELOPMENT			
The City strives for a local job market that provides opportunities for all Tucsonans to meet their basic needs and pursue career advancement, matched with a well-educated, well-qualified workforce that is able to meet the dynamic needs of businesses and employers.	JW1, JW6, E5		
The City strives for a local job market that provides opportunities for all Tucsonans to meet their basic needs and pursue career advancement, matched with a well-educated, well-qualified workforce that is able to meet the dynamic needs of businesses and employers.	RG5, RG JW4, JW BC4, AC		
The City strives for a sustainable and diversified economy that maximizes Tucson's strategic location and balances traditional import and export of resources with locally supplied goods and services to meet local demand.			
The City strives for a sustained increase in household income and wages, and a sustained reduction in the poverty rate, especially for Tucson's children, seniors and disabled residents.	JW1, JW JW7		
The City strives for a community that is healthy physically, mentally, economically, and environmentally.			

THE NATURAL ENVIRONMENT

Plan Tucson Goals	Plan Tucson Policies	STAR Sustainability Metrics	Long-term Community Sustainability Outcomes
ENERGY & CLIMATE READINESS			
The City strives for a reduction in the community's carbon footprint and greater energy independence.	EC1, EC2, EC4, EC5, EC6, EC7, EQ7, HP1, LT9, LT13, LT14, LT17	Annual amount of greenhouse gas emissions reductions	Community carbon neutrality is reached through reducing, to the extent possible, the amount of greenhouse gases emitted, and addressing the remainder of those emissions through carbon offsets, while promoting economic vitality and protecting human health.
	EC4, LT9, LT11, LT12, LT13, LT14, LT15, LT16, LT17	Annual vehicle miles traveled	Usage of low-carbon and highly-efficient transportation, fleet, and fuel options is maximized and annual vehicle miles traveled is minimized.
<p>The City strives for a reputation as a national leader in the development and use of locally renewable energy technologies, water conservation, waste diversion and recovery, and other emerging environmentally-sensitive industries.</p> <p>The City strives for sound, efficient, ecological policies and practices in government and in the private sector.</p>	EC4, EC5, EC6, EC7, E7	Percentage of local energy supply from renewable energy sources; percent ownership of alternative fuel vehicles by residents	Community-wide energy use is reduced to the extent possible, and remaining energy needs are exceeded with renewable and environmentally-benign energy sources.

THE ECONOMIC ENVIRONMENT

Plan Tucson Goals	Plan Tucson Policies	STAR Sustainability Metrics	Long-term Community Sustainability Outcomes
JOB & WORKFORCE DEVELOPMENT			
The City strives for a local job market that provides opportunities for all Tucsonans to meet their basic needs and pursue career advancement, matched with a well-educated, well-qualified workforce that is able to meet the dynamic needs of businesses and employers.	RG5, RG6, JW4, JW6, BC4, AC9	Number of new businesses, annual sales, and total employment in targeted industry sectors	The advanced training and higher education community catalyzes economic growth through technological research and development; technology transfer and sharing of cost and risk of investments in innovation; development of intellectual capital and entrepreneurial spirit; and preparation of local workers with the skills needed for innovation.
The City strives for a sustained increase in household income and wages, and a sustained reduction in the poverty rate, especially for Tucson's children, seniors and disabled residents.	JW1, JW2, JW7	Median household income; percentage of household incomes that meet or exceed the living wage standard	Every worker earns a living wage, receives affordable benefits, has access to programs that support families, and can gain upward economic mobility through improved productivity in a safe and non-discriminatory workplace environment.
The City strives for a community that is healthy physically, mentally, economically, and environmentally.			

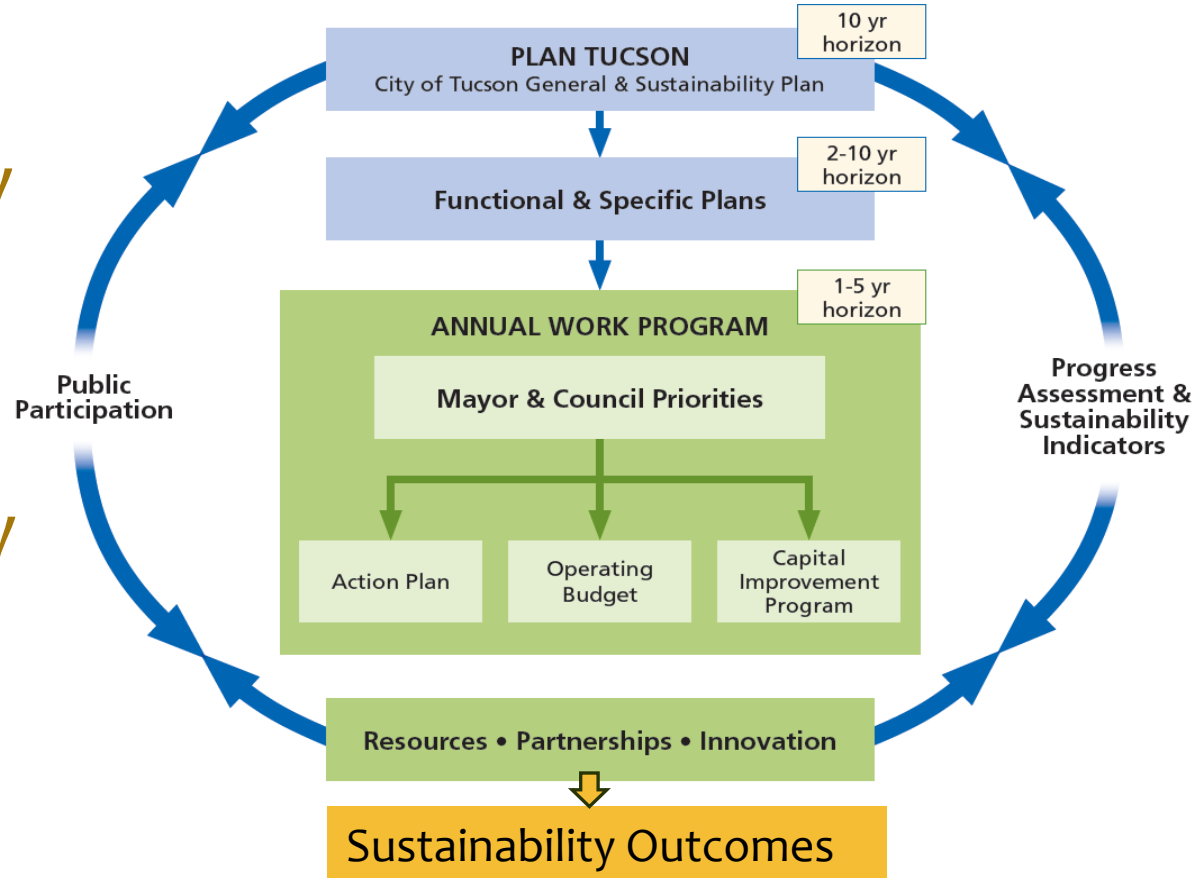
THE SOCIAL ENVIRONMENT

Plan Tucson Goals	Plan Tucson Policies	STAR Sustainability Metrics	Long-term Community Sustainability Outcomes
The City strives for a community that is healthy physically, mentally, economically, and environmentally.	PH1, PH2, PH7, PH8, PR3, PR5, PR7, AG3, GI3	Percentage of kids and adults that are physically active	Every resident has fundamental knowledge of, and physical and economic access to, healthy living opportunities that promote an active lifestyle, good nutrition, and physical wellness.
URBAN AGRICULTURE			
The City strives for a sustainable urban food system.	AG1, AG2, AG3, AG4, PH2, LT10	Fresh food produced locally; access to low-cost healthy food; nutrition	A collaborative network integrates sustainable food production, processing, distribution, consumption, and waste management in order to create a more locally based, self-reliant food economy where all people, at all times, have physical and economic access to sufficient, safe, and nutritious food to meet their dietary needs and food preferences.
EDUCATION			
The City strives for an educated citizenry.	E1, E3, E4, E5, E6, E7, ED1	Reading proficiency; high school graduation rates	Equitable and lifelong educational attainment exists for all residents through a strong public school system, quality educational facilities, and a wide range of learning opportunities that are accessible and appropriately serve all segments and all ages of the populations.

Plan Tucson Goals	Plan Tucson Policies	STAR Sustainability Metrics	Long-term Community Sustainability Outcomes
An urban form that conserves natural resources, improves and builds on existing public infrastructure and facilities, and provides an interconnected multi-modal transportation system to enhance the mobility of people and goods.	LT1, LT9, LT11, LT12, LT13, LT14, LT15, LT16, LT22, LT25, ED5, PR9, PH1, PH4, PH8	Mode split; percent of income spent on transportation costs; pedestrian and bicyclist fatalities; vehicle miles traveled	Safe, affordable, diverse, and efficient mobility options are accessible to all residents, with emphasis on walking, bicycling, and mass transit that reduce vehicle miles traveled.
An urban form that conserves natural resources, improves and builds on existing public infrastructure and facilities, and provides an interconnected multi-modal transportation system to enhance the mobility of people and goods.	ED1, ED10	Residential housing density in urban core; employment density; diversity of land uses; transit availability; walkability; urban design standards for density (e.g., setbacks).	This is a centered city with a vibrant downtown core that: is an appealing and valued community asset; embodies the City's economic heart and cultural soul; represents a shared community vision; attracts residents and visitors alike; reflects genuine partnership and coordination between municipal, business, non-profit, and neighborhoods; and is supported by appealing gateways and corridors that connect with other major activity centers.

The Process of Implementation

- * Will be the overarching guide for all City efforts, budget
- * Will have progress metrics, publicly tracked



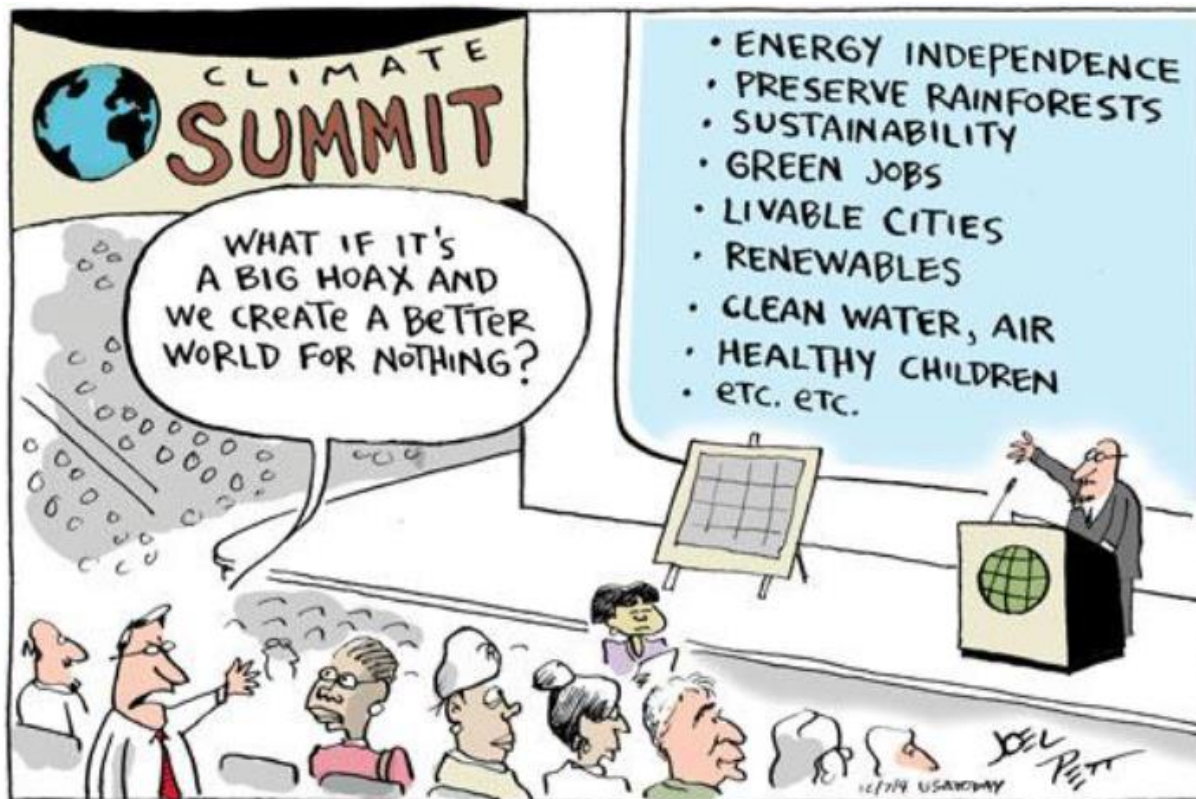
Next Steps

- * Internal restructuring, improved coordination
- * Continue to collect data for STAR pilot
- * Coordinate with S.AZ Indicators Project
- * Finalize Plan Tucson metrics, tracking tools
- * Data dashboards
- * Develop action plans...

STAR as a Rating System

- * Not sure about usefulness...
 - * Pilot ratings will not be complete until around May/June
 - * Some cities already have metrics; don't know how STAR can fit
 - * Issues with metrics
 - * Ambient Light and Noise – metric not accurate; biased against cities
 - * Community Water Supply – does not handle our situation well
 - * Volunteerism – data only exists for some cities; the rest of us have to do surveys
 - * Green Infrastructure – doesn't account for need to balance against water conservation
- * Data collection takes a lot of time
- * Framework > Rating

Questions?



Leslie Ethen

520-791-4675

Leslie.Ethen@tucsonaz.gov