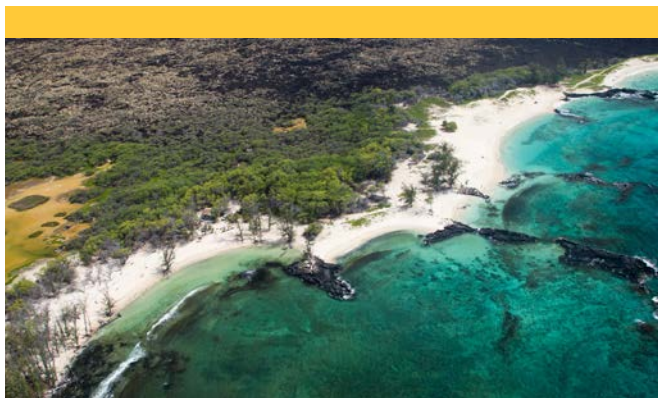


Sustainability Impact

2019



#1 in the U.S. for innovation

ASU ahead of Stanford and MIT

– U.S. News & World Report, 5 years, 2016–2020



#1

in the U.S. for
SDG Impact

–Times Higher
Education

#2

Green Power
Partner University

–US Environmental
Protection Agency

Top 10

Cool School

–Sierra Magazine

#4

in the World

–AASHE Stars

Platinum Rating

–AASHE Stars



Leading in Sustainability Impact

For 2019, Arizona State University ranked top in the U.S. and fifth in the world out of 766 institutions in achieving the United Nations Sustainable Development Goals. In the annual rankings published April 22, 2020 by Times Higher Education magazine, ASU scored 96.3 out of 100 points, ahead of University of North Carolina at Chapel Hill and Penn State.

This report recognizes some of the many initiatives that contributed to ASU's top ranking, as well as educational programs, student successes, research, outreach, partnerships and solutions that made news in 2019 for their sustainability impact.

sustainability.asu.edu/impact

1 NO POVERTY



Eradicating poverty in all its forms remains one of the greatest challenges facing humanity. To end poverty in all forms and dimensions by 2030 involves targeting the most vulnerable, increasing basic resources and services, and supporting communities affected by conflict and climate-related disasters.

**End poverty
in all its forms
everywhere**





Center for Child Well-Being

Arizona State University organizes training to improve access to basic services for all. In partnership with ASU's Sanford Inspire Program and School of Social Work, the **Center for Child Well-Being** developed four free online educational modules to expand teachers' knowledge of topics related to child welfare and students' broader social context. The center has also trained hundreds of state employees to improve child safety and well-being.

childwellbeing.asu.edu

Film students expose complexities of homelessness

Two short films were created by ASU journalism and sustainability students. *Hiding in Plain Sight* spotlights a woman's experience with homelessness. *Fighting for a Home* follows a homeless military veteran.

The human cost of expensive homes

Easing the problem of homelessness will require communities to build more affordable housing, and that will require creating a new narrative with people who oppose it, according to Arizona State University experts.

Forests play a role in alleviating poverty

Forests are essential to the livelihoods of about 20 percent of the global population. Research from the Center for Biodiversity Outcomes contributes toward a systematic understanding of forest-poverty relationships.

2 ZERO HUNGER



Making sure all people—especially children—have sufficient and nutritious food all year involves promoting sustainable agriculture, supporting small-scale farmers and equal access to land, technology and markets. It also requires international cooperation to ensure investment in infrastructure and technology to improve agricultural productivity.

End hunger, achieve food security and improved nutrition and promote sustainable agriculture





Swette Center for Sustainable Food Systems

At a university level and through student projects, ASU provides sustainable agriculture knowledge, skills and technology to farmers, food producers and policy-makers. The Swette Center takes a holistic and transdisciplinary approach to develop innovative ideas and policy-relevant knowledge to make the consequences of our food choices explicit in quantitative and qualitative terms. The center's work encompasses water and energy use, carbon footprint and nutrition, innovations in agtech, and the well-being and livelihood of farmers and others working in food systems.

foodsystems.asu.edu



SolarSENSE for soil conditions

An ASU student capstone project, SolarSENSE makes use of SolarSPELL technology developed at ASU to allow off-grid rural farms to monitor soil conditions without the need for electricity or costly internet connections.

Calling organizations to use phosphorus efficiently

Phosphorus is critical to global food security but devastating to water quality. Organizations have committed to lower their phosphorus footprints in response to a challenge by the Sustainable Phosphorus Alliance, based at ASU.

A map of the national food supply chain

Vegetables follow a complex supply chain that moves crops from where they're grown to where they're used. FEWSION maps the food, energy and water supply chains for every community in the United States.

3 GOOD HEALTH AND WELL-BEING



Good health is essential to sustainable development. This goal takes into account widening economic and social inequalities, rapid urbanization, threats to the climate and the environment, the continuing burden of HIV and other infectious diseases, and emerging challenges such as noncommunicable diseases.

**Ensure healthy
lives and promote
well-being for
all at all ages**





Global Center for Applied Health Research

By collaborating with health institutions locally and around the world, Arizona State University works to improve health and well-being outcomes. The **Global Center for Applied Health Research** designs, implements and tests evidence-based and culturally appropriate interventions to improve the health and well-being of youth and families around the world through equitable research collaborations between transnational teams of researchers and community partners.

globalappliedhealth.asu.edu

Protecting Olympic spectators in Tokyo

To help city officials and the Tokyo Olympic Committee prepare for extreme heat, ASU sustainability scientists mapped out microclimates along the marathon course to identify dangerous hot spots.

Sustainably grown legume a source of protein

People have a number of reasons for adopting plant-based diets, but plant protein is harder to absorb. ASU researchers find mung beans are a sustainably grown legume that provides bioavailable protein to consumers.

Nature's cooling systems

ASU researchers and The Nature Conservancy worked with residents of three neighborhoods in Phoenix and Mesa to produce heat action plans that address social and geographical equity concerns.

4 QUALITY EDUCATION



Education is one of the most powerful and proven vehicles for sustainable development. This goal seeks to ensure that all girls and boys complete free primary and secondary schooling by 2030. It also aims to provide equal access to affordable vocational training, to eliminate gender and wealth disparities, and achieve universal access to a quality higher education.

Ensure inclusive and equitable quality education and promote lifelong learning opportunities for all





Education for Humanity



Education for Humanity is one way ASU provides access to educational resources for those not studying at the university. The program partners with local organizations to offer access to higher education and workplace readiness for refugees and displaced persons. In 2019, ASU began offering an agribusiness course to refugees in Uganda; the customized content was delivered using SolarSPELL technology and has already improved livelihoods.

edplus.asu.edu

Virtual field trip to Makalawena, Hawai'i

Through a partnership with Kamehameha Schools, people around the world can visit and learn about two of Hawai'i's natural and cultural sites without having to leave their computer.

Confronting grand challenges through humanities

The Humanities Lab engages students of all disciplines with real-world problems, joining with the community to understand questions of values and culture as they work to develop solutions for a desirable future.

Solar-powered library transforming global education

The SolarSPELL initiative by mid-2019 had distributed hundreds of digital libraries filled with carefully curated educational resources to communities in nine countries that have limited or no internet connectivity.

5 GENDER EQUALITY



Ending all discrimination against women and girls is not only a basic human right, it's crucial for sustainable future. It is vital to give women equal rights to land and property, sexual and reproductive health, and to technology and the internet. Today there are more women in public office than ever before, but encouraging more women leaders will help achieve greater gender equality.



**Achieve gender
equality and
empower all
women and girls**



WE Empower UN SDG Challenge

The WE Empower Challenge is a global business competition for women entrepreneurs and social entrepreneurs who are advancing the United Nations Sustainable Development Goals and inspiring entire communities to create the world we want by 2030

Envisioned to ignite global awareness of the valuable contribution women entrepreneurs can make in contributing to the SDGs and the obstacles they still face, the program honors and invests in transformational women entrepreneurs by providing access to seed capital, unique trainings, capacity building, a network of their peers, visibility and credibility for their work.

weempowerchallenge.org

Girls-only cybersecurity event attracts hundreds

ASU's CybersecurityDay4Girls was hosted in partnership with IBM to introduce young girls to the field of cybersecurity. Middle school girls are the focus of this program because women are typically underrepresented in cybersecurity roles.

The women behind Sinaloa's seafood industry

For 20 years Maria Cruz-Torres has been documenting the female shrimp traders of Sinaloa's prized seafood industry. In 2019, she won an award for Latina achievement.

WE Empower helps launch Target Gender Equality

During the United Nations General Assembly in September 2019, the WE Empower UN SDG Challenge and ASU helped launch a program to accelerate gender equality by setting and reaching corporate targets for women's representation and leadership in business.

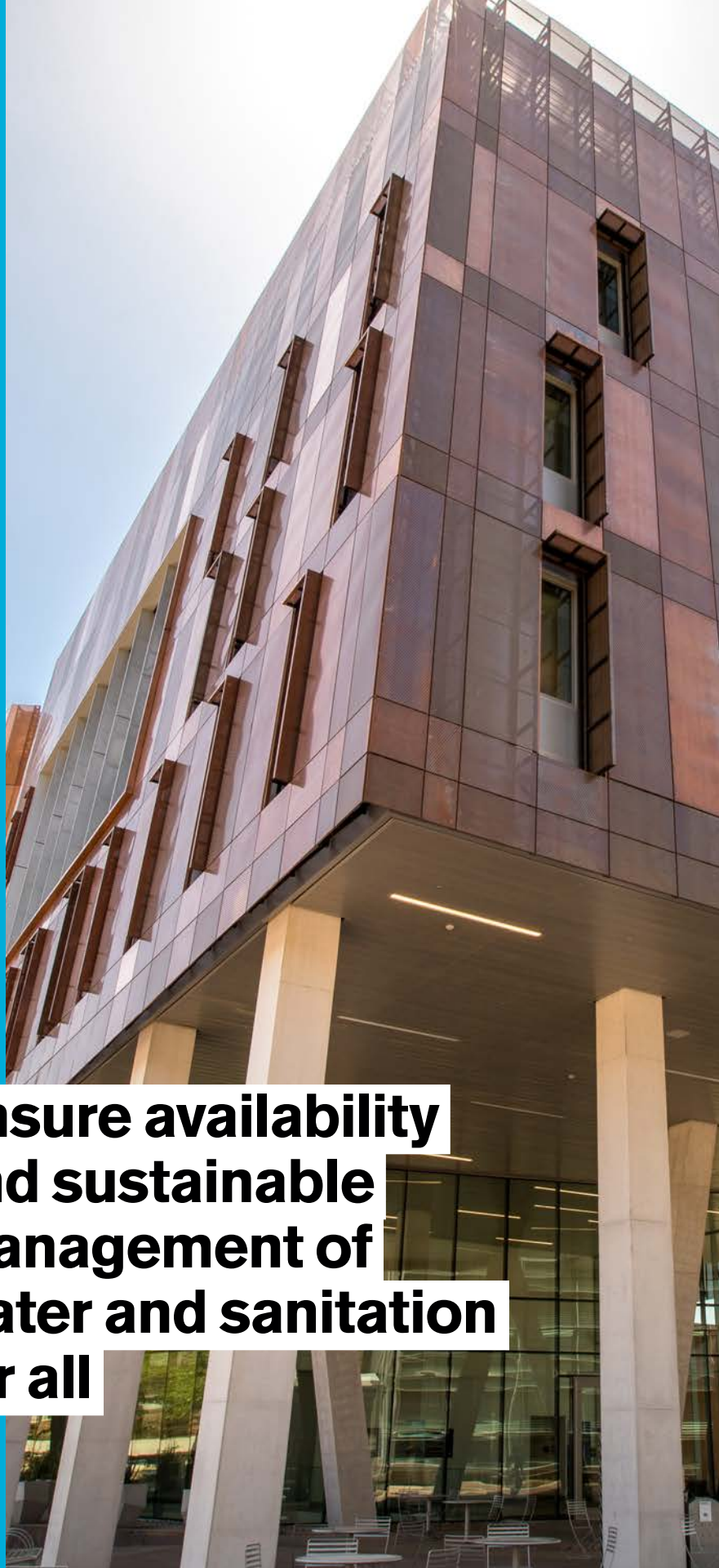
6

CLEAN WATER
AND SANITATION



Water scarcity affects more than 40 percent of people, an alarming figure that is projected to rise as temperatures do. Safe and affordable drinking water for all by 2030 requires we invest in adequate infrastructure, provide sanitation facilities, and encourage hygiene. Protecting and restoring water-related ecosystems is essential.

Ensure availability and sustainable management of water and sanitation for all





Water conservation through LEED certification

ASU leads by example, minimizing campus water use through building standards and sustainable landscaping practices; the university's wastewater is treated and used to recharge groundwater basins for indirect reuse.



..... **Biodesign Institute Building C** in 2019 was certified LEED platinum by the U.S. Green Building Council, for its strategies to achieve high performance in sustainable site development, water efficiency, energy and atmosphere efficiency, materials selection, indoor environmental quality and innovation in design. Water stewardship was a project prerequisite, with an array of water-efficient fixtures leading to a projected 42 percent water savings beyond the LEED baseline.

cfo.asu.edu/leed

ASU a lead partner in Water/Ways exhibition

This traveling exhibition from the Smithsonian Institution was designed for small-town museums, libraries and cultural organizations to convene conversations about water's impact on American culture.

Drylab2023: Living on less than 4 gallons a day

As the challenges of conserving water grow and water crises are growing globally, this month-long experiment of life with water shortages showed how people might respond.

Interstate 10 corridor as a laboratory for water issues

The 2019 Ten Across summit was hosted in Phoenix. Participants examined the region as a living laboratory for the future of the entire country. I-10 crosses 11 cities along a 2,400 mile stretch of the Southern U.S.

7 AFFORDABLE AND CLEAN ENERGY



As the global population continues to grow, so will the demand for cheap energy, and an economy reliant on fossil fuels is creating drastic changes to our climate. Ensuring energy for all involves investing in solar, wind and thermal power, improving energy productivity, expanding infrastructure and upgrading technology to encourage growth and help the environment.



**Ensure access
to affordable,
reliable, sustainable
and modern
energy for all**



Center for Negative Carbon Emissions



The **Center for Negative Carbon Emissions** is an intellectual leader in sustainable energy infrastructure design, which is critical to achieving a carbon negative energy economy. The center advances carbon management technologies that can capture carbon dioxide directly from ambient air in an outdoor operating environment and also considers the economic, political, social and environmental ramifications that will arise with the availability of an affordable air capture technology.

cnce.engineering.asu.edu

Carbon-capture technology moves to commercialization

Named one of the most important engineering innovations of 2019 by Popular Science, the proprietary technology acts like a tree that removes CO₂ from the air to be sequestered or sold for re-use.

Puerto Rico project promotes energy independence

Using flexible solar panels, a novel racking design and battery backup, community leaders can safely remove and replace panels before and after a major storm or hurricane, thanks to a collaboration with ASU doctoral students.

The political logics of clean energy transitions

Work by sustainability scientist Hanna Breetz finds that politics affects both costs and deployment of clean energy technology, and different countries with different politics affect the global success of the technology.

8 DECENT WORK AND ECONOMIC GROWTH



This goal promotes sustained economic growth, higher levels of productivity and technological innovation. Encouraging entrepreneurship and job creation are key to this, as are effective measures to eradicate forced labor, slavery and human trafficking. With these targets in mind, the goal is to achieve full and productive employment and decent work for all women and men.

Promote inclusive and sustainable economic growth, full and productive employment and decent work for all



Entrepreneurship + Innovation



E+I serves as a connecting and collaborating resource for entrepreneurs at all stages across ASU and throughout the Valley of the Sun. E+I is one of the first 12 organizations to win the Kauffman Inclusion Challenge for its work to engage diverse entrepreneurs from a variety of backgrounds, ensuring that Arizona communities are reaching their full potential.

entrepreneurship.asu.edu

Prof pens essay on economics and the natural world

The modern theory of economic growth focuses on the inputs of capital, labor and technical progress, says Christopher Jones. Economists never imagined that outputs of waste and pollution could diminish economic growth.

The cost impact of deporting undocumented workers

A W. P. Carey professor has received a USDA grant to follow up on preliminary research that showed widespread removal of undocumented farmworkers would cause skyrocketing wages and grocery prices.

Enhancing livelihoods in Alto Mayo, Peru

What is the future of coffee in a changing climate, and how can we enhance farmer livelihoods while protecting nature? ASU, Conservation International and Potsdam Institute explored the future of Alto Mayo, Peru.

9 INDUSTRY, INNOVATION AND INFRASTRUCTURE



With over half the world population now living in cities, mass transport and renewable energy are becoming ever more important, as are the growth of new industries and information and communication technologies. Promoting sustainable industries, investing in scientific research and innovation, and bridging the digital divide are all important ways to facilitate sustainable development.

Build resilient infrastructure, promote inclusive and sustainable industrialization and foster innovation



Office of Applied Innovation

At ASU, innovation is embedded in the culture of the university. For five consecutive years, U.S. News and World Report has named ASU as the most innovative university in its annual rankings comparing more than 1,500 institutions.

The Office of Applied Innovation identifies and applies emerging scientific, technological, design and policy innovations to advance ASU's teaching and learning mission. The office works to improve the economic, social, cultural and overall health of the communities ASU serves by expanding access to educational and economic opportunity.

appliedinnovation.asu.edu



Improving military base infrastructure

ASU experts consulted on military base resiliency in the areas of energy, food, water, communications and mobility, helping the Navy-Marine Corps team bolster resilience to increasing incidents of severe weather and cyberattacks.

Car ownership affects income opportunity

Outside of New York City, which has done the least of all U.S. cities to adapt to automobiles, Americans without cars are not able to access the economy as well as people with cars, according to ASU research in urban planning.

Focusing on technology for public interest

ASU is a charter member of the Public Interest Technology University Network, a partnership of 21 colleges and universities dedicated to building the field of public interest technology and educating civic-minded technologists.

10 REDUCED INEQUALITIES



Income inequality is on the rise—the richest 10 percent have up to 40 percent of global income whereas the poorest 10 percent earn only between 2 to 7 percent. This goal involves improving the regulation and monitoring of financial markets and institutions, encouraging development assistance and foreign direct investment to regions in need. Facilitating the safe migration and mobility of people is also key to bridging the widening divide.

Reduce inequality within and among countries



First-Year Success Center

ASU has an institutional commitment to improve access to education for all. The university in 2019 was designated a First Forward institution for its commitment to improving experiences and advancing successful outcomes of first-generation college students, who comprise more than 35% of the ASU undergraduate and graduate student body. The First-Year Success Center provides success coaching to thousands of students annually with significant impact on first-generation student success.

fys.asu.edu

Fellowships support diversity scholars

Two annual fellowships were established by ASU in 2019 to support scholars in exploring the diverse history of the West, its intersections with race and violence, and American Indian history.

Disabilities studies degree program launched

Students learn to understand and intervene when features of the environment — cultural, social, physical — don't contribute to an equitable living space and living conditions for people with different abilities.

ASU's most diverse class finishes first year

Among the class of 2022, 45.5 percent are from minority backgrounds, and 62 percent are from Arizona. Of the first-year students from Arizona, 54 percent are from an underrepresented group.

11 SUSTAINABLE CITIES AND COMMUNITIES



Making cities sustainable means creating career and business opportunities, safe and affordable housing, and building resilient societies and economies. It involves investment in public transport, creating green public spaces, and improving urban planning and management in participatory and inclusive ways.



Make cities and human settlements inclusive, safe, resilient and sustainable



Urban Resilience to Extremes



The vision of the **UREx Sustainability Research Network** is to promote the transition to cities of the future that are resilient by virtue of their flexible, adaptable, socially equitable and ecologically based infrastructure in the face of a higher incidence of extreme events, more culturally diverse communities and continued urbanization pressure. Working with cities in the U.S. and Latin America, the network creates decision-support tools that confront these resiliency challenges and put cities on a path to sustainable futures.

urbanresilience.asu.edu

Reimagined public space drives community change

A team from ASU's Design School was invited to co-design a park in Hawai'i. The students learned firsthand about the area's culture and nature before hosting a public conversation with neighbors to workshop ideas and finalize plans.

Predicting the flood before the waters rise

A new project uses existing traffic cameras to observe curbs and gutters at intersections. An algorithm helps identify flooding locations; the data can be used to inform drivers of areas they should avoid.

Streamlining the study of nature in cities

Life sciences professor Nancy Grimm and her co-authors won the Ecological Society of America's 2019 Sustainability Science Award for creating an international consensus on how to approach urban ecology.

12 RESPONSIBLE CONSUMPTION AND PRODUCTION



Achieving sustainable development requires that we change the way we produce and consume goods and resources. This goal requires the efficient management of our shared natural resources and the way we dispose of toxic waste and pollutants, encouraging industries, businesses and consumers to recycle and reduce waste, and supporting developing countries to move toward more sustainable patterns of consumption.



**Ensure sustainable
consumption and
production patterns**



Resource Innovation and Solutions Network

In partnership with the city of Phoenix's Reimagine Phoenix initiative, RISN advances integrated resource management through a global network of public and private partners using collaboration, research, innovation and application of technologies to create economic value, driving a sustainable circular economy. RISN recognizes that waste is no longer trash, it's a resource that can create new jobs, industries and technologies.

resourceinnovation.asu.edu

Students assist Tempe with sustainable purchasing

Students conducted research and worked with the city's procurement department staff and vendors to help the city think through its options as it considers how it might adopt a sustainable purchasing plan.

Conserving water in the city of Peoria

ASU Project Cities selected Peoria as a partner city for 2019-20. As part of the city-university partnership, students will work with the city to create plans for water shortage response and water conservation.



Partnering on zero waste for MLB spring training

Led by sustainability students in partnership with the Oakland A's, a Recycle Rally initiative tested and implemented strategies to reduce landfill impact, increase operational efficiencies and improve the fan experience.

13 CLIMATE ACTION



Global warming threatens irreversible consequences if we do not act. This goal aims to help developing countries adapt to climate change and invest in low-carbon development and to integrate disaster risk measures, sustainable natural resource management and human security into national development strategies.

Take urgent action to combat climate change and its impacts



Urban Climate Research Center



ASU develops and tests urban design and management policies and strategies that enhance the productivity, health and sustainability of urban populations. **Urban Climate Research Center** is a leader in urban climate science initiatives and activities, convening interdisciplinary teams of urban climate researchers from the social and physical sciences to address issues of extreme heat, air quality, flooding and drought, urban ecology, and infrastructure services including energy, water and transportation.

urbanclimate.asu.edu

Experts say a carbon economy is possible

An ASU workshop considered how government, philanthropy and private capital can fund and de-risk creation of new technologies for the energy transition from hydrocarbons to renewable energy like solar and wind power.

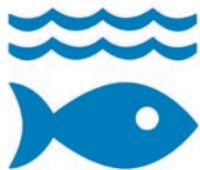
Conference on synthetic viruses, disaster preparedness

A biosecurity workshop at ASU was attended by a diverse group of people ranging from scientists to FBI agents and first responders. Event topics also included do-it-yourself biology, ethics and bio information security.

Mapping the way to resilient cities

Power, water and transportation systems that urban areas rely upon must be reimagined to withstand climate change. ASU is developing social, ecological and technological infrastructure systems for urban resilience.

14 LIFE
BELOW WATER



The world's oceans – their temperature, chemistry, currents and life – drive global systems that make the Earth habitable for humankind. This goal aims to sustainably manage and protect marine and coastal ecosystems from pollution, address the impacts of ocean acidification, and enhance conservation and the sustainable use of ocean-based resources through international law.

Conserve and sustainably use the oceans, seas and marine resources for sustainable development



Center for Global Discovery and Conservation Science

Through its operations, research and partnerships, ASU works to maintain and extend existing ecosystems and their biodiversity and raise awareness about conservation and sustainable utilization of the oceans, seas, lakes, rivers and marine resources.



..... The **Center for Global Discovery and Conservation Science** leads scientific and technological research focused on mitigating and adapting to global environmental change. Active projects include the largest satellite mapping of coral reefs in the world. In partnership with Lenfest Ocean Program, the center will provide information to help Hawai'i identify areas for coral reef conservation.

gdcs.asu.edu

Tiny pieces of plastic in our food and water

Marine biologist Beth Polidoro and her lab set out to make the oceans and the seafood we eat safe from microplastics and other pollutants. Her work helps guide conservation and environmental policies.

Including recreational fisheries in policymaking

Sustainability professor Josh Abbott and co-authors offer steps for policy reform that would allow recreational fisheries to transition to policies and regulations that benefit a wide variety of people while fostering sustainability.

Priming the ocean's carbon pump

Biodesign Institute oceanographer Susanne Neuer researches microscopic phytoplankton that drive the ocean's absorption of carbon dioxide out of the atmosphere and how climate change might affect their ability to absorb CO₂.

15 LIFE
ON LAND



Natural habitats and biodiversity are part of our common heritage and support global food and water security, climate change mitigation and adaptation, and peace and security.

This goal aims to promote sustainable use of terrestrial ecosystems, sustainably manage forests, combat desertification, halt and reverse land degradation and halt biodiversity loss.

Protect, restore and promote sustainable use of terrestrial ecosystems



IUCN Red List Partner

ASU informs policy, planning and conservation action locally and around the world. As a knowledge partner of the International Union for Conservation of Nature, ASU documents the impacts of threats to the world's biodiversity and informs the IUCN Red List of Threatened Species.

As part of this work, ASU's Center for Biodiversity Outcomes studies key biodiversity areas along international borders, in the Sonoran Desert of Arizona and the Gulf of California. ASU also provides training on how to conduct and implement the Red List assessment methodology.

biodiversity.asu.edu/iucn

\$100 billion a year to save life on Earth

ASU ecologist Greg Asner was one of 19 international authors of a science-based plan to integrate and implement climate and nature deals on a global scale to avoid human upheaval and biodiversity loss.

UN report details the state of biodiversity

Life sciences professor and sustainability scientist Leah Gerber was a lead author of a global biodiversity assessment by the Intergovernmental Science-Policy Platform on Biodiversity and Ecosystem Services.

Leaf litter research fills dryland knowledge gap

When leaves fall on drylands, the decomposing litter is often transported far from where it fell. Ecosystem scientist Heather Throop assessed transport patterns to inform our understanding of dryland ecosystems.

16 PEACE, JUSTICE AND STRONG INSTITUTIONS



This goal aims to significantly reduce all forms of violence, and work with governments and communities to end conflict and insecurity.

Promoting the rule of law and human rights are key to this process, as is reducing the flow of illicit arms and strengthening the participation of developing countries in the institutions of global governance.

Promote peaceful and inclusive societies, access to justice, and effective, accountable and inclusive institutions for all



Global Security Initiative

In our digital age, human security must mean not only freedom from traditional threats like sexual violence or economic and political oppression, but also freedom from virtual threats like algorithmic bias, hate speech, online harassment, and unequal access to data, digital resources, and skills. GSI builds responsive technologies and capacities to help individuals and communities participate fully and safely in digital culture and develops policy recommendations for data privacy and information harvesting. This work is part of a larger body of work developing tools, technologies and systems for policymakers and implementers to address complicated security challenges that are global in scale, borderless by nature, interdependent and often have no clear solutions.

globalsecurity.asu.edu

Global citizens debate “We, the Internet”

ASU Consortium for Science, Policy and Outcomes asked citizens about their hopes and concerns about the Internet, bringing frequently unheard perspectives of at-risk populations into discussions about digital communication.

Using technology to combat human trafficking

ASU's Global Security Initiative helped organize a conference at the United Nations on how computational science and artificial intelligence can help combat human trafficking and end modern slavery.

Addressing the effects of mass incarceration

Through ASU's Inside-Out Prison Exchange program, students visited Perryville Prison once a week for a semester to learn about crime and justice alongside women who are incarcerated there.

17 PARTNERSHIPS FOR THE GOALS



This goal aims to enhance global cooperation by supporting national plans to achieve all the targets. Promoting international trade and helping developing countries increase their exports is all part of achieving a universal rules-based and equitable trading system that is fair and open and benefits all.

**Strengthen
the means of
implementation
and revitalize
the global
partnership for
sustainable
development**





UNEP World Conservation Monitoring Centre

ASU contributes to implementation of the Sustainable Development Goals through policy development, cross-sectoral and international collaboration, research and education.

ASU is a member of the PLuS Alliance, whose experts are working with the United Nations Environment Programme to create a knowledge-to-action framework for implementation and evaluation of the SDGs, including case studies in Indonesia, Bangladesh and India, that will be disseminated to practitioner communities globally.

plusalliance.org

A new approach to tech policy and governance

ASU and the World Economic Forum called for new and improved rules and laws, designed and delivered through a global, multi-stakeholder approach to managing the risks and benefits of technology worldwide.

ASU expertise informs Hawai'i Green Growth

Hawai'i Green Growth network is the one of the United Nations' first Local2030 sustainability hubs worldwide. As a member of the hub's board, ASU's Amanda Ellis is directly involved in developing national-level SDG policy.

UN Global Compact Leaders Summit

WE Empower U.N. SDG Challenge awardees convened in New York City, attending the U.N. Global Compact Leaders Summit, among other events. Five women leaders, one from each of the five U.N. regions, were recognized.

ASU Charter

ASU is a comprehensive **public research university**, measured not by whom it excludes, but by **whom it includes** and how they **succeed**; advancing **research and discovery** of public value; and assuming **fundamental responsibility** for the economic, social, cultural and overall health of the **communities** it serves.

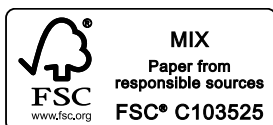
SUSTAINABLE DEVELOPMENT GOALS

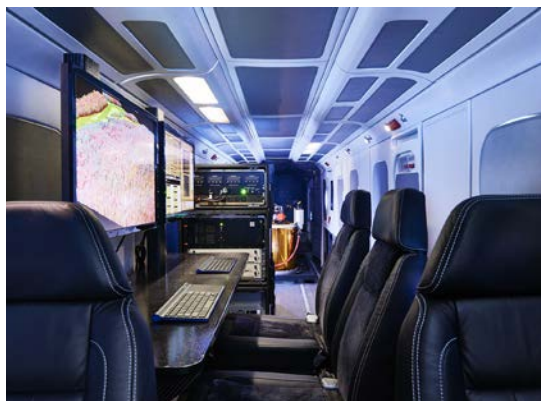


Sustainability Impact 2019

This report includes descriptions from the United Nations 2030 Agenda for Sustainable Development, the SDG Knowledge Platform and the United Nations Development Programme. It also includes content from ASU Now and departments across the University.

©2020 Arizona Board of Regents





sustainability.asu.edu/impact

P: (480) 965-2975

E: sustainability@asu.edu