

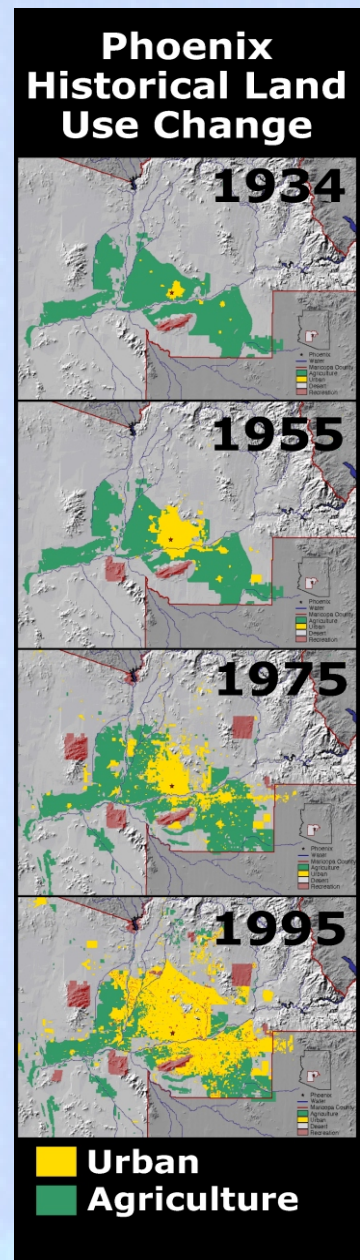


Greater Phoenix 2100

The Opportunity

Imagine living in New York City in the nineteenth century or Chicago in the early twentieth century—two cities that became exciting, creative places in the midst of dramatic population growth. These were times when science, art, and commerce advanced but were also times of considerable social and environmental disruption.

Looking back over a hundred or more years, we can see and understand the mistakes and triumphs of these times—cultural and technological advances like building codes and sanitary sewer systems, the urban park movement in New York, and the large-scale, civic improvement movement in Chicago. But how did the people of these times see the future and its implications?



The Phoenix metropolitan region is now a national leader in growth. The rates are dizzying. The region grew 30 percent between 1990 and 2000 to three million people. The city of Phoenix is now the sixth largest city in the nation. Here, just as in the past, dramatic growth has created cultural advancements along with a host of environmental and social issues. Much of the region's civic energy is today focused on quality of life issues and how to respond to new opportunities and threats. How will people 100 years from today view these decisions? What will be seen as the triumphs and mistakes?

Change doesn't just happen—a variety of economic, social, natural, and technological forces drive change. Today in universities, government, and the private sector, the amount of research being done to document and model the forces of change is unprecedented. This research allows us to better understand the issues of our past and today. Can this research help us understand the possibilities for our future and thus make better decisions today?

The Project

Greater Phoenix 2100 (GP2100) proposes to assemble and make available a wide variety of scientific and technical data on the past, present, and possible futures of the Phoenix region. It strives to build on the premise that knowledge can be used to create better lives for future generations. Arizona State University (ASU) possesses a significant storehouse of information about greater Phoenix. ASU faculty and students study and analyze practically every important aspect of central Arizona from its underlying geological structure to daily real estate transactions. Significant data exist concerning climatic variations, the flora and fauna of the Sonoran biome, the regional history and economic trends, and the health and education of the population. The goal of Greater Phoenix 2100 is to make this information, together with the vast data collected by public and private organizations, available in ways that will enable wise, knowledge-based decision making that can shape this region during the next 100 years.

The 100-year time frame presents a purposefully longer-term view of the metropolitan region than has previously been developed. While short-term visioning is limited by immediate considerations, a century-long perspective requires the incorporation of multi-generational concerns and changes in technology. A 100-year time frame also allows for evaluation of geologically common but societally rare events such as droughts, major floods, and gradual climate changes.

Greater Phoenix 2100 will seek to complement existing activities being conducted at ASU and other organizations in the region. These will include but not be limited to:

The Central Arizona-Phoenix Long-Term Ecological Research project, one of only two National Science Foundation projects in the United States.

The Morrison Institute for Public Policy, whose collaboration with the Brookings Foundation generated *Hits and Misses* a report on regional growth issues.

The Environmental Fluid Dynamics Program and its work with the Arizona Department of Environmental Quality.

Geological Remote Sensing Laboratory and its work on the ASTER Urban Environmental Modeling Project with NASA to monitor 100 cities around the globe.

Generations of citizens, policy makers, and scholars will benefit from Greater Phoenix 2100. The project will result in products that will help community and business leaders make wiser decisions. It will assist local, state, and federal officials in planning and designing programs and policies. The project will also aid teachers and students in their understanding of natural and social processes.

In short, Greater Phoenix 2100 will be a strong, scientific resource for considering the region's long-term prospects and for creating the kind of future its residents want.

You Need To Be Involved!

Provide information and futures analysis to help people better understand the 100-year regional implications of the decisions being contemplated today.

The Challenge

Regional Atlas For Summer 2002

GP2100 will be producing a demonstration regional atlas that will focus on providing information about two or three current regional issues. The target date for publication is Summer 2002. If you are interested in working on the atlas or you have data that can be displayed in map form that is relevant to a regional issue, NOW is the time to get involved. Contact Ray Quay (ray.quay@asu.edu) or visit the GP2100 web site.

The Products

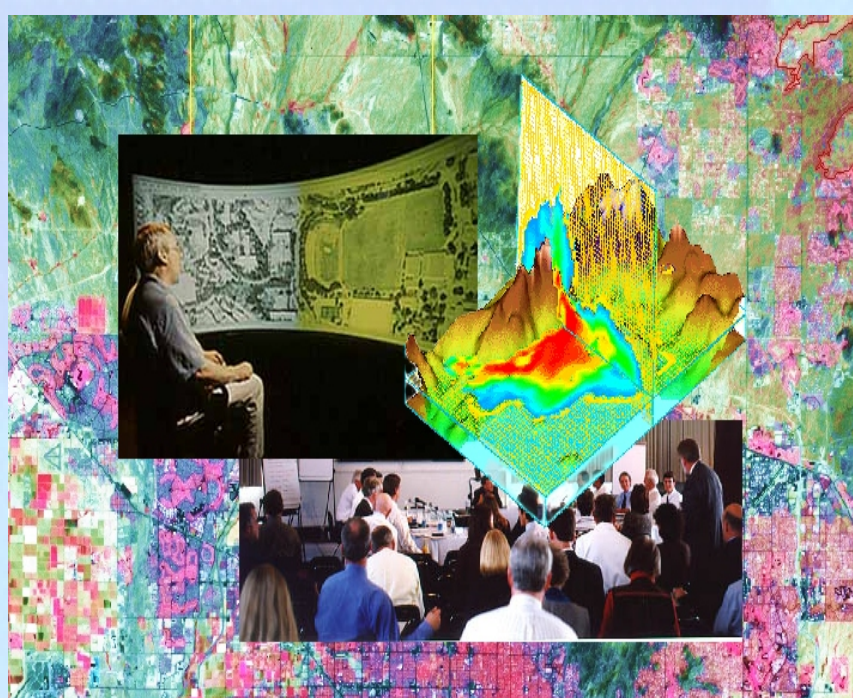
The Greater Phoenix 2100 project proposes producing the following products.

Regional E-Atlas: Existing and future data related to the natural environment, economy, and physical urban development of the region would be coalesced into a dynamic warehouse of continuously updated information made available in electronic and more conventional forms.

Regional Future Scenarios: Existing and future regional modeling efforts would be integrated to allow speculation across a wide range of issues covering a diverse set of long-range (100 year) futures for the region.

Regional Decision Theater: A place where local leaders, citizens, students, and researchers can explore future options for the region.

Regional Education: A series of tools and events to help schools, community organizations, local governments, and the university better understand the region and the natural and social forces shaping its long-term future.



The People

Greater Phoenix 2100 seeks to meet the needs and engage in partnerships with people from a wide range of regional interests, including:

Regional decision makers and community leaders. Many community activities, including visioning exercises and open space ballot initiatives, point to an acute need for sound, long-term regional information.

The general public. According to several opinion polls, the public is deeply concerned about growth, environmental quality, and the livability of their neighborhoods.

Middle and high school students and teachers. The project will offer engaging learning opportunities for students and teachers about scientific and decision-making processes and how they are connected to regional issues.

ASU faculty and students. GP 2100 will be an umbrella and a catalyst for researchers studying the urban ecology of the region. It will provide the opportunity to explore the integration of scientific information, the exploration of new technologies for representation and visualization, and a platform for advancing modeling and decision theory.

Future generations. The century-long approach means that there will be several generations of audiences.

www.gp2100.org