

# The effects of urbanization on the wildlife community across the Phoenix Valley

## INTRODUCTION

- Mammal species respond to the effects of urbanization in contrasting ways, where species can be classified as urban exploiters, urban avoiders, or suburban adaptable.
- For example, coyotes (Fig. 1) are highly adaptable to human development and can persist in areas of relatively intense urbanization, which can lead to elevated conflicts with people.

Fig 1.  
Coyote  
near  
urban  
area



Fig 2.  
Puma  
in  
natural  
area



- In contrast, other mammals are sensitive to the effects of urbanization and will avoid human development and activities. For example, many carnivores (Fig. 2) can be negatively impacted by urbanization due to their life history characteristics.
- Relatively few studies have focused on understanding the mammal community across the gradient of urbanization in the Phoenix Valley. This is especially surprising given that Phoenix is the sixth largest city in the US, has an extensive network of natural and semi-natural areas across the valley that support wildlife populations, and many neighborhoods experience human-wildlife conflicts for a variety of species, including coyotes and javelina.

## RESEARCH OBJECTIVES

To understand how wildlife populations and wildlife-human conflict zones occur across the gradient of urbanization, we propose to study a suite of natural and semi-natural areas throughout the Phoenix Valley across multiple seasons. Our specific objectives are to:

- Inventory the diversity of wildlife species present
- Evaluate habitat relationships for urban exploiters, urban avoiders, and suburban adapters in relation to landscape characteristics
- Create predictive maps of habitat for species and wildlife conflict zones across the Phoenix Valley

## METHODS

- We deployed 50 wildlife cameras (Fig. 3) throughout the Phoenix Valley (Fig. 4) at CAP locations.

Fig. 3. Wildlife camera used to document wildlife. We have deployed 50 wildlife cameras across the Phoenix Valley that will operate throughout 2019.

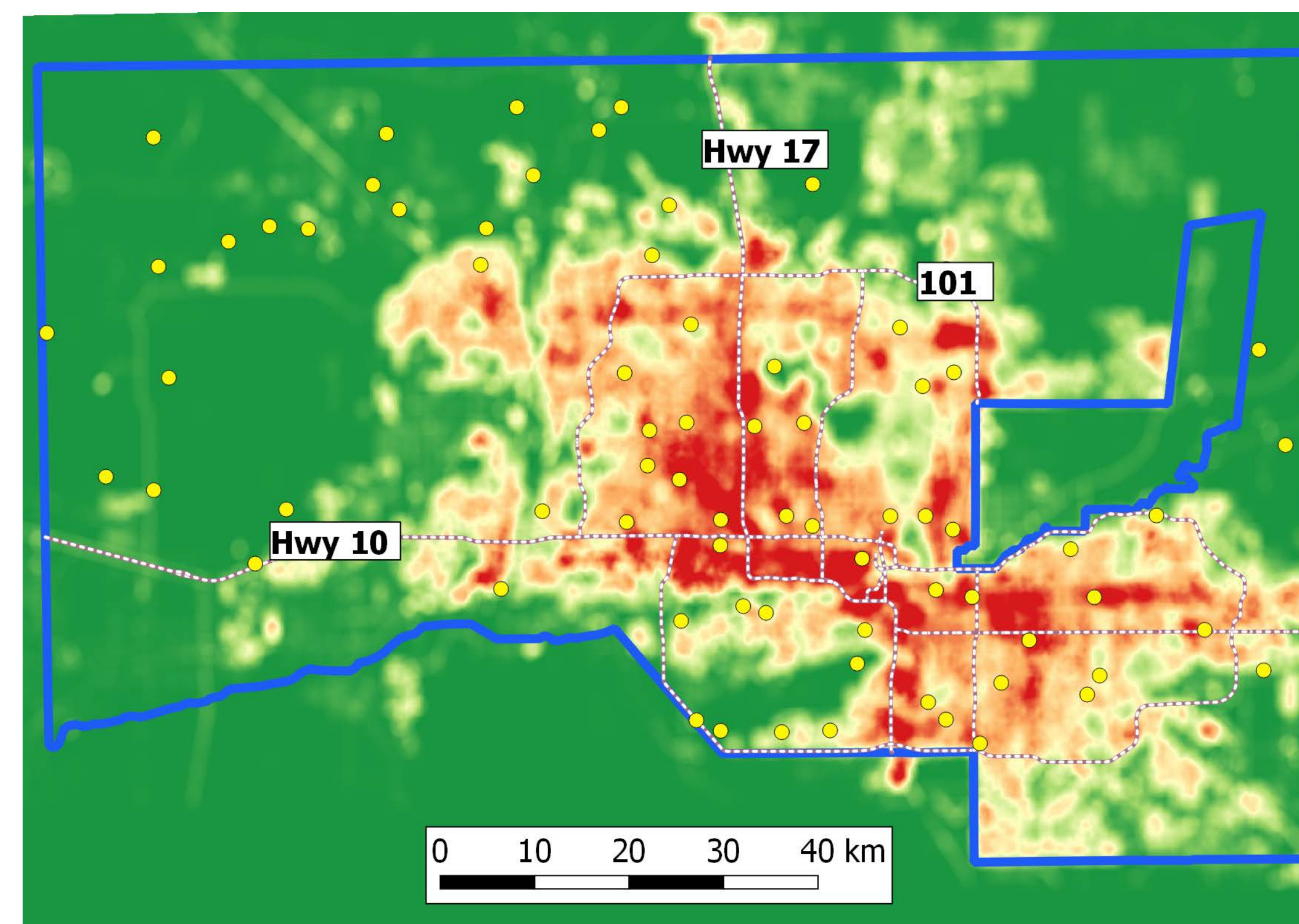


Fig. 4. Study area across the Phoenix Valley. The blue outline shows the boundary for the CAP LTER. Urban intensity varies from low (green) to high (red). Yellow dots indicate CAP locations that were evaluated for deploying wildlife cameras.

- Wildlife cameras were placed in natural areas, semi-natural areas, and small residential parks to capture the gradient of urbanization throughout the Valley.
- Wildlife cameras will be deployed during the winter, spring, summer, and fall of 2019.
- Habitat relationships for mammals will be evaluated using occupancy modeling to understand how species respond to a suite of biotic and abiotic factors. This information will be used to predict habitat quality for a suite of species, including coyote, javelina, raccoon, deer, bobcat, gray fox, rabbit species, striped skunk, ringtail, mountain lion, small mammal species, and other wildlife.
- We will also evaluate daily activity patterns for each species across seasons.

## HYPOTHESES AND PREDICTIONS

- We expect that urban exploiters, such as coyote, rabbit species, and raccoon, will most likely occupy areas with moderate to high levels of urbanization. In contrast, we expect that urban avoiders, such as mountain lion and bobcat, will most likely occupy areas with low levels of urbanization.
- It is predicted that riparian corridors and larger open space properties will support the greatest diversity of mammals.
- As consistent with previous research in urbanized areas, we expect that mammals will be more active during the day in less urbanized areas and in places experiencing less disturbance from human activities (Fig. 5).

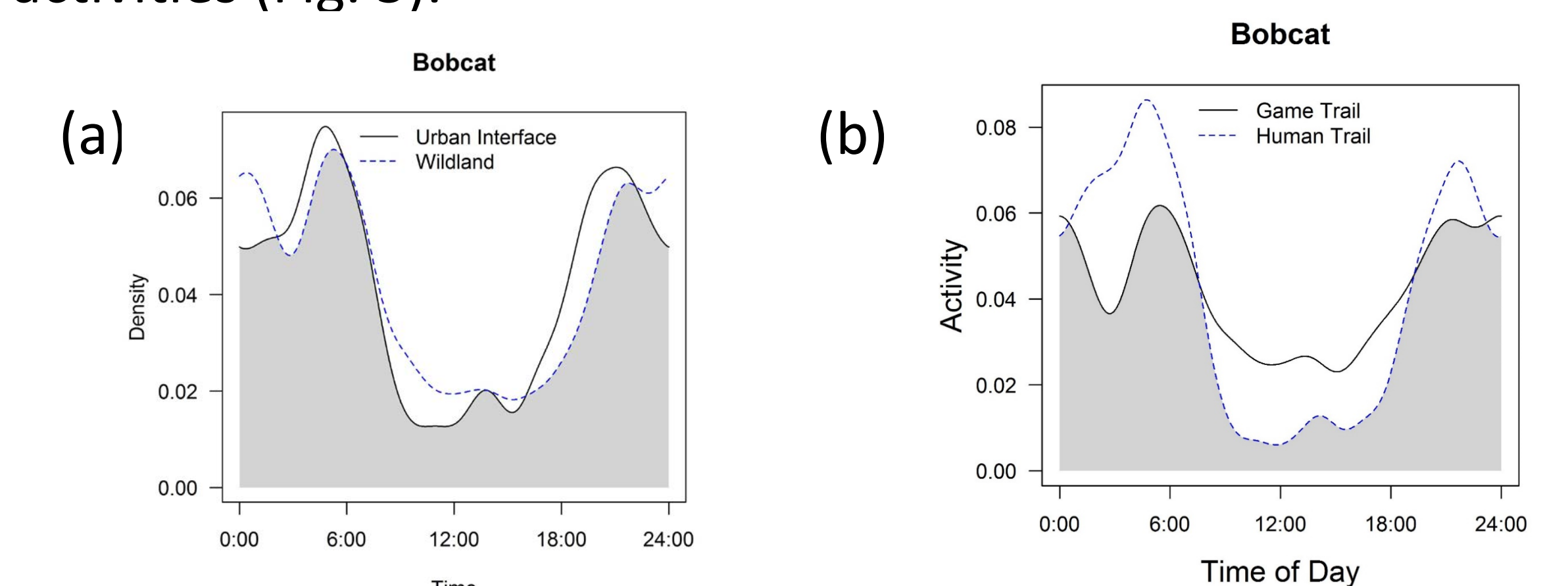


Fig. 5. Daily activity patterns of bobcats in urbanized and wildland habitat (a) and on human recreation and game trails (b). This data is from a study in urbanized Colorado from Jesse Lewis.

## APPLICATIONS TO MANAGEMENT AND CONSERVATION

- Our research results will be used as a foundation to educate the public about areas and types of urbanization that are most likely to experience human-wildlife conflicts for key focal species.
- In addition, our results can be used to conserve wildlife populations in areas experiencing urbanization.

## ACKNOWLEDGEMENTS

We thank the CAP LTER community for their support of this project. In particular, we appreciate the insight and guidance shared by Sally Whittlinger and Dan Childers. This work is also in collaboration with the Lincoln Park Zoo in Chicago and we thank Seth Magle for his support of this work. Diverse landowners make this project possible.