

# Impact of Urban-ness in Re/Insurance decision- making

Dr Rashmin Gunasekera

Workshop on Comparative Genetics of Cities

21<sup>st</sup> May 2010

Willis

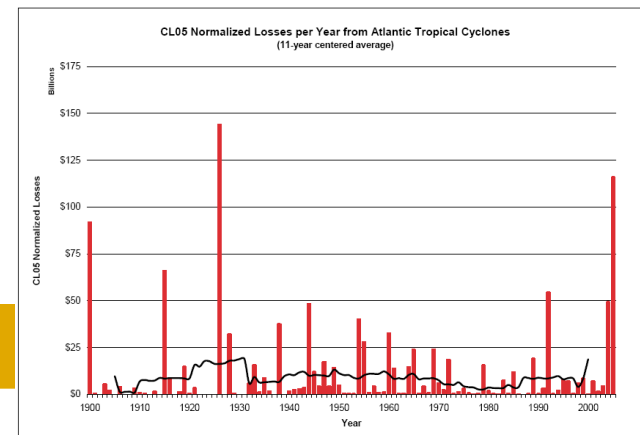
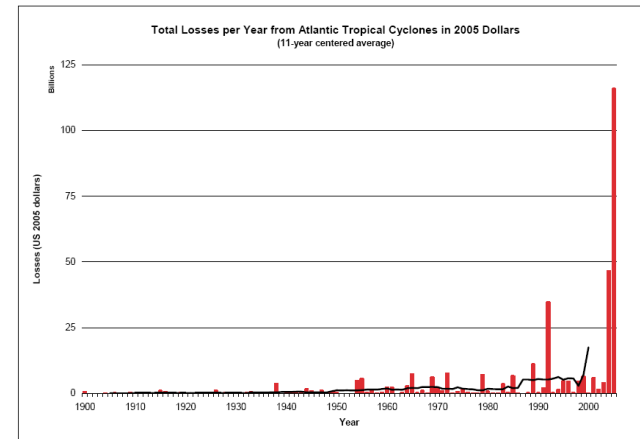
# Challenges of risk analysis

Insurance claims data is insufficient to determine scale and frequency of future loss potential

- Transient (vehicles, population)
- Sparse
- Short period – not representing length scales of natural event cycles

The alternative is to use catastrophe loss models

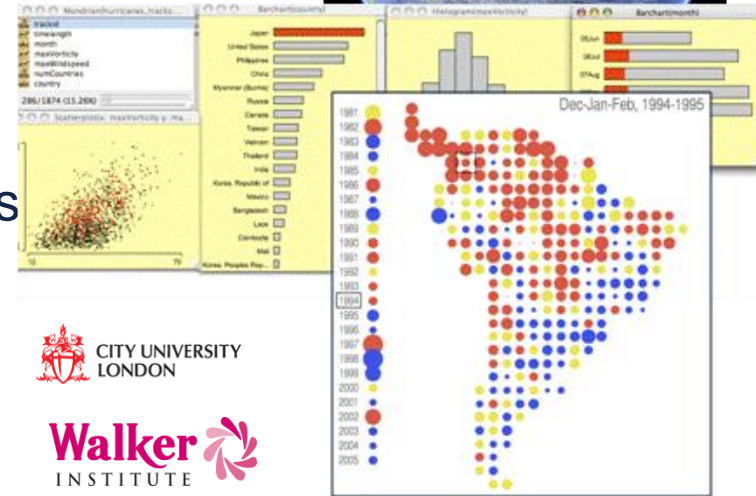
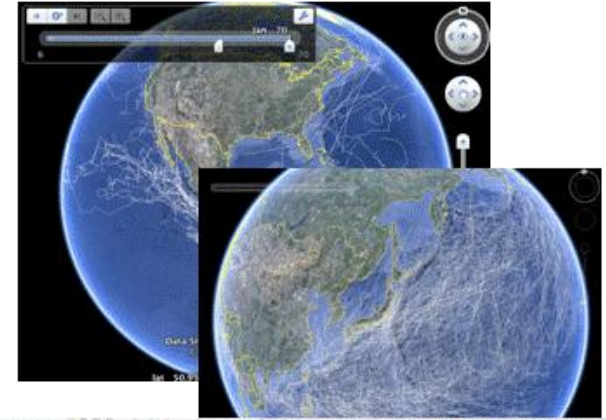
- Hazard (geophysical)
- Exposure (built environment, infrastructure, land cover, populations)
- Vulnerability (damage functions, loss potential)



# The need for data and clarity

Risk decisions are increasingly reliant on quantitative analytical tools to represent range of possible events

- Frequency, severity & impact of extreme events within a dynamic climate environment
- Natural hazards drive majority of global risks & cat losses
- Most of the affected areas are in Urban areas.
- *However, what constitutes an urban area is poorly defined – A core area of research of WRN*



CITY UNIVERSITY  
LONDON

Walker  
INSTITUTE

UNIVERSITY OF  
EXETER

University of  
Reading

Willis

# WILLIS RESEARCH NETWORK AS AT MARCH 2010

Willis  
Research  
Network



UNIVERSITÀ DI BOLOGNA



British  
Geological Survey  
NATURAL ENVIRONMENT RESEARCH COUNCIL



UNIVERSITY OF  
CAMBRIDGE



CITY UNIVERSITY  
LONDON

Colorado  
University of Colorado at Boulder



Durham  
University

ETH



EUCENTRE



Imperial College  
London



National Centre for  
Earth Observation  
NATURAL ENVIRONMENT RESEARCH COUNCIL



NCAR



Newcastle  
University



PRINCETON  
UNIVERSITY



Proudman  
Oceanographic Laboratory  
NATURAL ENVIRONMENT RESEARCH COUNCIL



Swansea University

SCRIPPS INSTITUTION OF  
OCEANOGRAPHY  
GLOBAL DISCOVERIES FOR TOMORROW'S WORLD



TOHOKU  
UNIVERSITY

Walker  
INSTITUTE

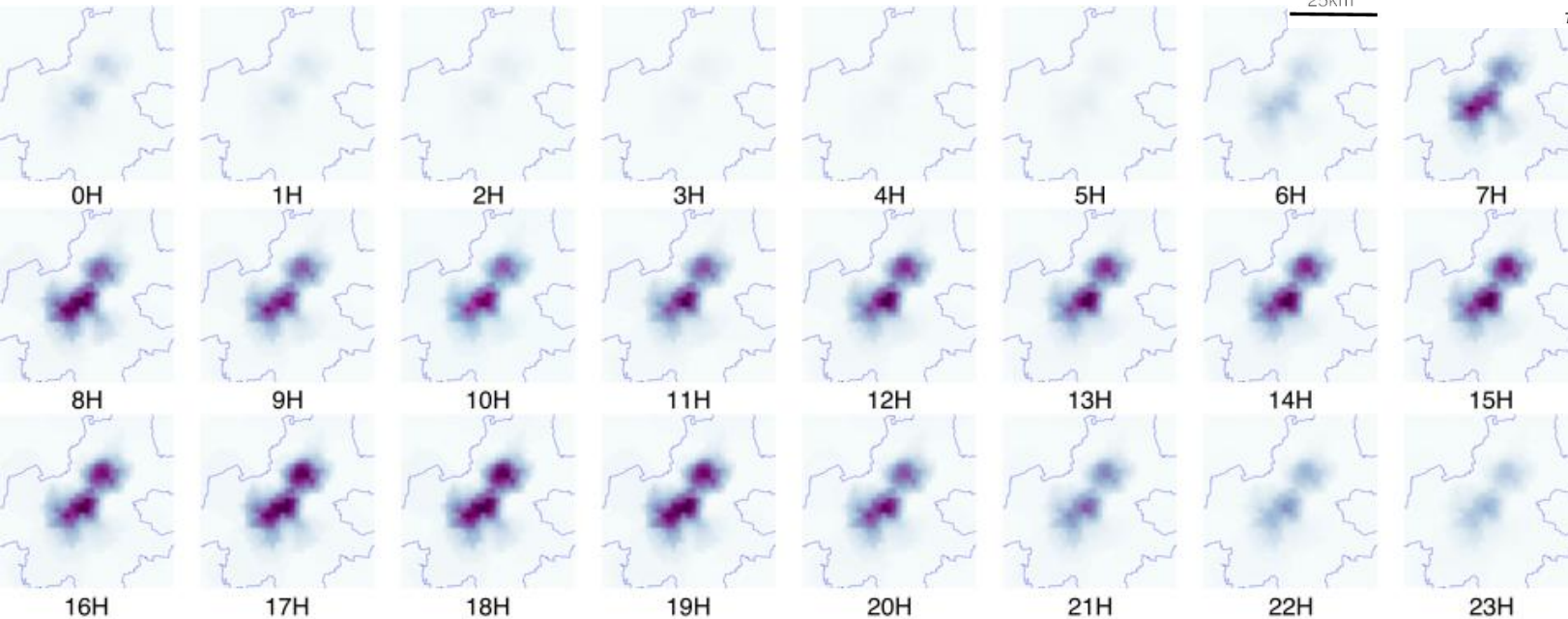
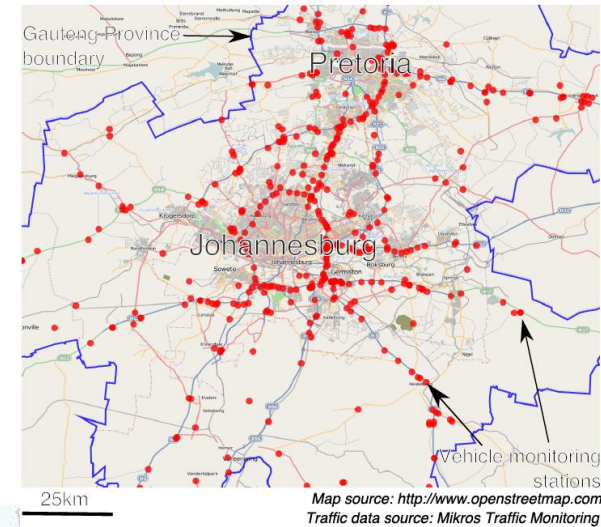


Willis

# Thames Gateway & SA Hail

## Planning Policy impacts on Risk and Insurance Vulnerability – Thames Gateway

- ❑ Study the dynamic and temporal variability of vulnerable areas to flooding such as Thames Gateway from a policy and planning perspective.
- ❑ Current work: Evaluate the current PPGs and potential impact to the insurance industry
- ❑ Next Step: Consider effect of alternative PPG from other countries and what effect that would have insurance industry

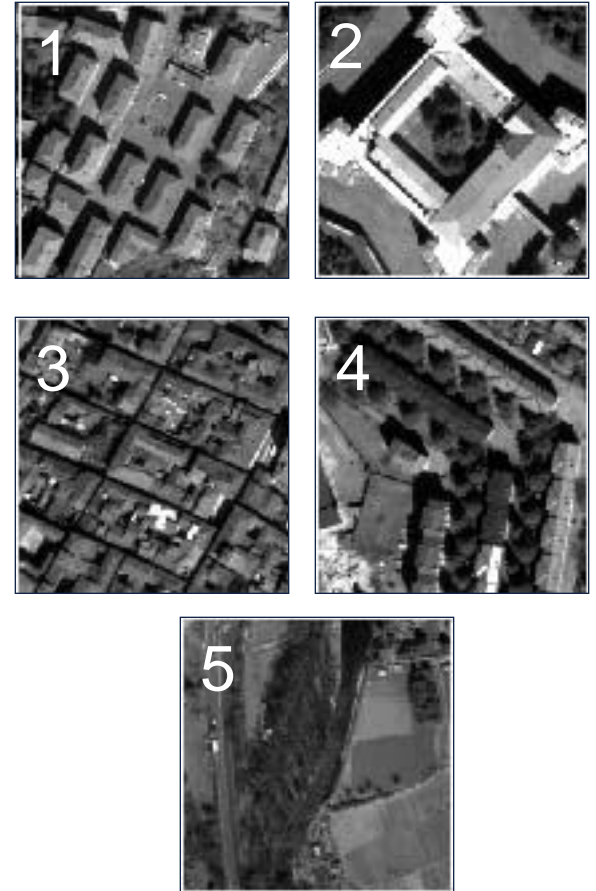


# Urban typological discriminators (unsupervised segmentation)

Segment the urban fabric according to morphology



Examples of morphologies in the  
centre of L'Aquila, Italy – Studies from  
WRN and Uni. of Cambridge



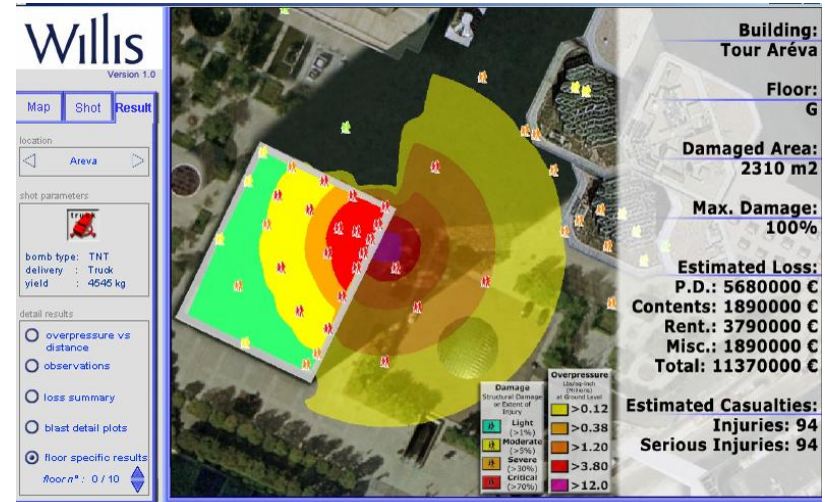
# Conflagration

## ■ Hazard modelling:

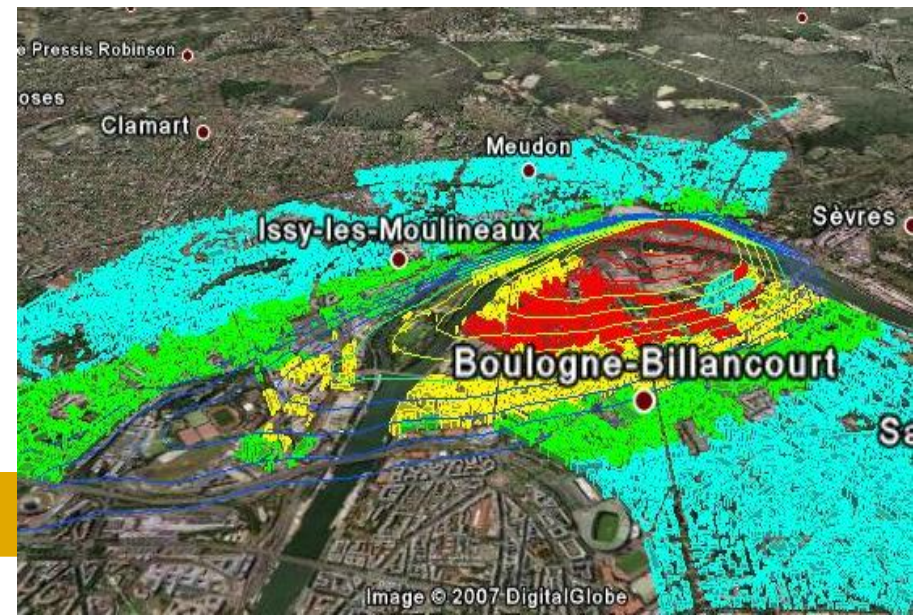
- Thermal effects
- Atmospheric parameters
- Pollution

## ■ Scenarios:

- Time element
- Transportation risks: impact on a network
- Domino effects
- Probabilistic modelling

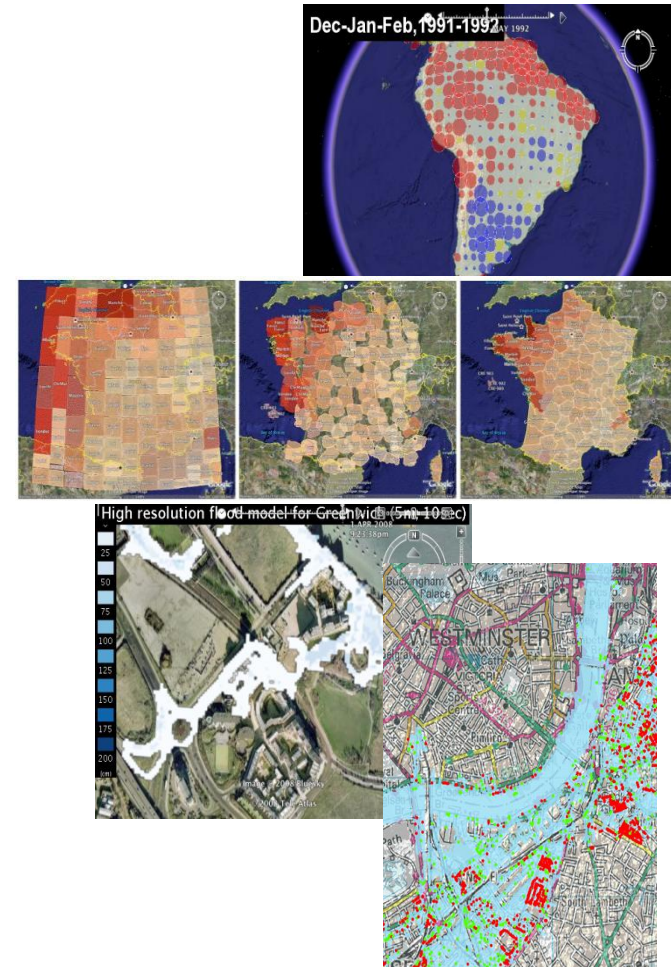


WRN and Ambiental high resolution terrorism model



# Geospatial

- New geospatial visualisation methods – e.g. Google Earth
- Techniques for complex multidimensional data visualisation and display – e.g. Willis Model Sensitivity Analysis (MSA)
- WRN will develop a new, strategic blueprint for remote sensing application across the insurance market
- Create a central focus and thought leadership between re/insurance industries and the remote sensing communities – academic, aerospace, commercial technological, data



WRN collaboration with City University in London. Also Thames Flood scenario using Willis Thames flood model and Address Layer property locations. Reproduced with permission from Ordnance Survey data.