

**Cathy Pickering**

Smarter Planet Leader, North East Europe, IBM

## Sustainable Cities

Flood chaos hits Portuguese island of Madeira



## The Reality of Global Integration

The world is connected

**ECONOMICALLY**

**SOCIALLY**

**TECHNICALLY**

A series of shocks

- Climate change
- Energy geopolitics
- Global supply chains
- Terrorism
- Financial crisis
- Population

## Engaging with the y generation – climate is decadal and impacts new generations

The y generation cares about sustainability

**Need to share resources across a growing global population**

**Will work differently**

**Crowd sourcing**

**Move to Cities**

**Sustainable Transport and Energy**

**New standards for built environment**

**NGOs and citizens more influential**



Risk exists at macro and micro scale

**Water Scarcity**

**Food**

**Shelter**

**Energy**

**Health**



# Linking observations to provide help in Disaster Management and prevention

International Charter for Space and Major Disasters

## 50% Flood Activations

Collaboration between

ESA

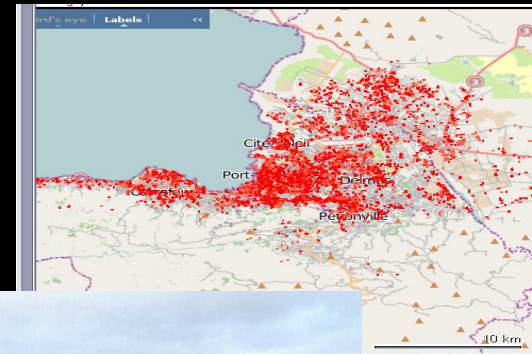
World Bank

Academia

Re-Insurance

NGOs

Governments



## Raising awareness and encouraging behavioral change

Collaborative Initiatives can

**Move the climate change debate into government policy**

**Establish reporting recognising uncertainty**

**Provide pro-active guidance to save life and reduce damage**

**Work with WMO and Environment Agencies to improve planning policy and improve defences**

**Encourage open exchange of data**

**Facilitate collaboration of Academia, Government Agencies, Citizens, NGOs**

**“Fair Trade policy”**

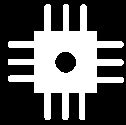


Courtesy of Prof Fang, Beijing Normal University

## **The Digital and Physical Infrastructures of the World are Converging**

Computational power is being put into things we wouldn't recognize as computers. Indeed, almost anything — any person, any object, any process or any service, for any organization, large or small — can become digitally aware and networked.

## Infusion of Academic Research into all aspects of cities reflecting the way the world works



Earth Observation to predict and validate flooding, wind storms, earth quakes and ash

**INSTRUMENTED**



Combining business, academic, government and NGO data can facilitate understanding

**INTERCONNECTED**



Develop collaborative **citizen** focused policy exchanges

**INTELLIGENT**

## The World is Getting Smarter



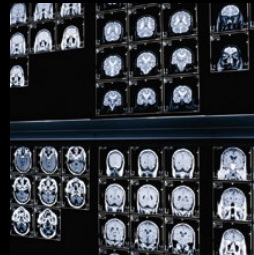
Smarter  
Transportation



Smarter  
Education



Smarter  
Food Systems



Smarter  
Healthcare



Smarter  
Energy



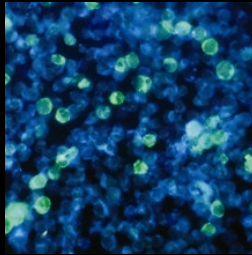
Smarter  
Retail



Smarter  
Countries



Smarter  
Government  
Services



Smarter  
Water



Smarter  
Public Safety



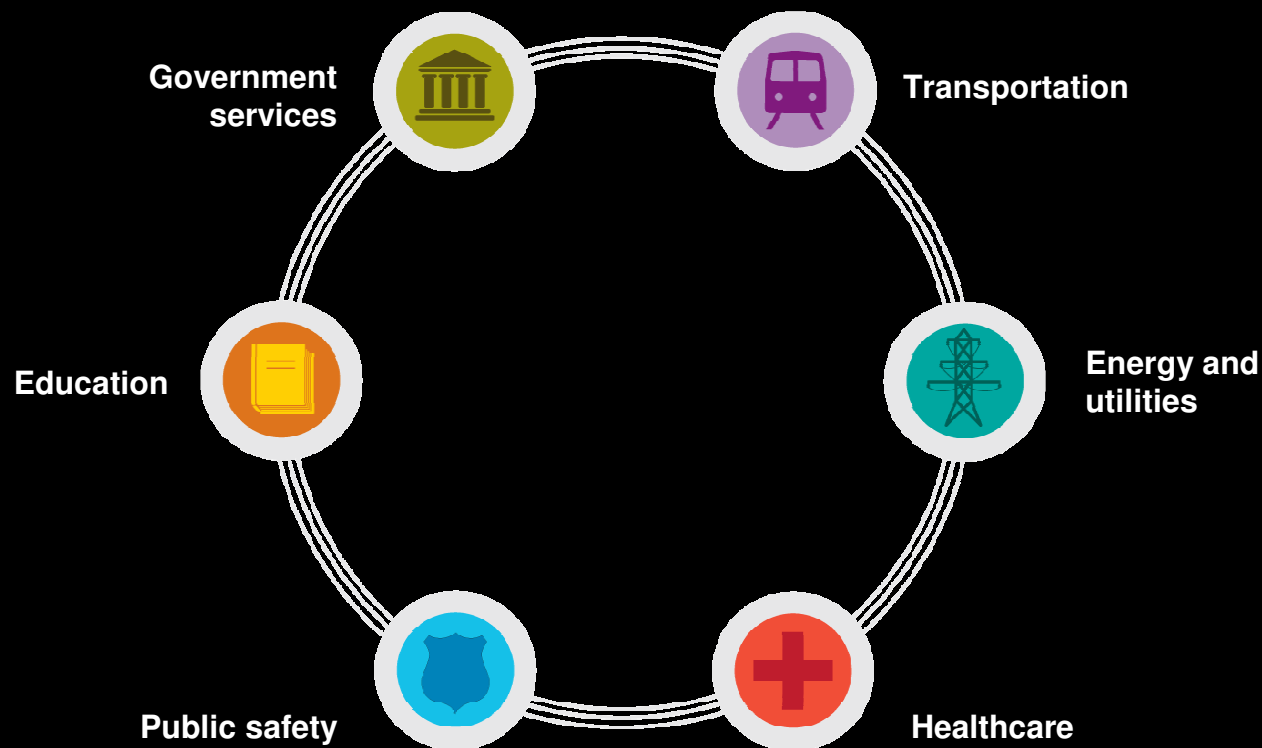
Smarter  
Regions



Smarter  
Cities

## The City: A System of Systems

The city is a microcosm of the major challenges and opportunities facing the planet today—intensified and accelerated. Here, all man-made systems come together and interact with one another.

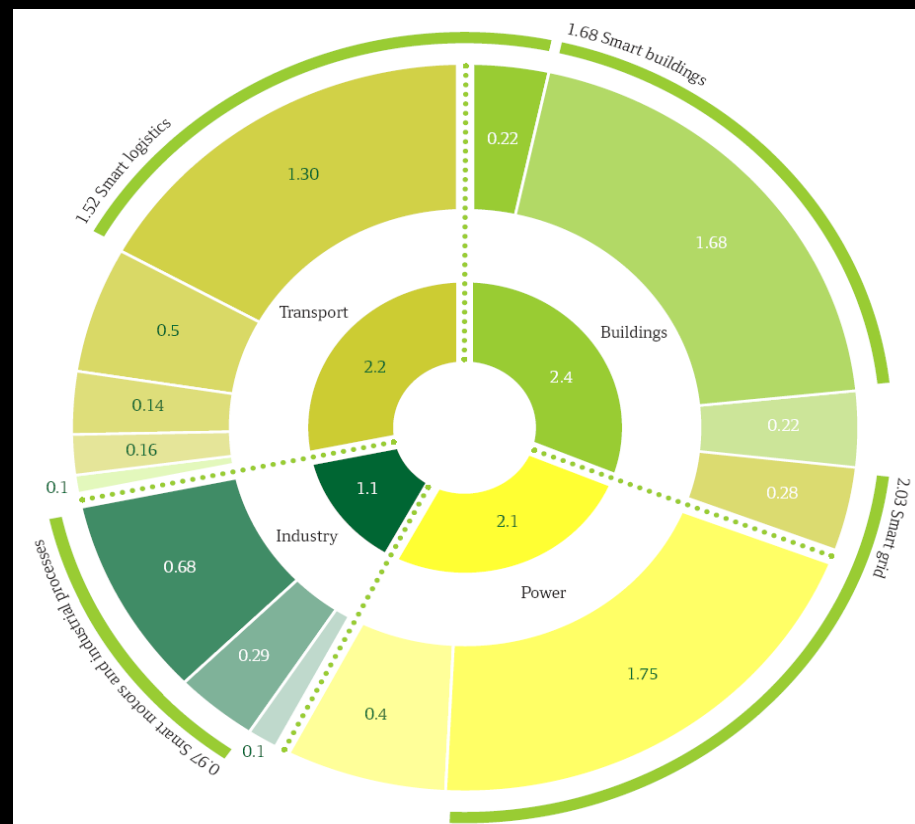


## Smarter Buildings can help tackle climate change

Information and Communications Technology (ICT) can significantly improve energy efficiency and reduce GHG emissions, driving potentially \$1 Trillion in energy savings per year by 2020 and 7.8 Gigatons CO<sub>2</sub>e abatement

**Smart Logistics:**  
**\$442B/year**

**Smart Industrial Automation:**  
**\$107B/year**



**Smart Buildings:**  
**\$341B/year**

**Smart Grids:**  
**\$125B/year**

Source: The Climate Group, "Smart 2020: Enabling the Low Carbon Economy in the Information Age." 2008

# The New Leadership Requirements for 21<sup>st</sup> Century Insurers

**I. COLLABORATION**

**II. STANDARDS**

**III. OPENNESS AND INNOVATION**



## 3 Questions for the workshop

Are we

**COLLABORATING**

effectively?

Are we asking the right questions to provide the

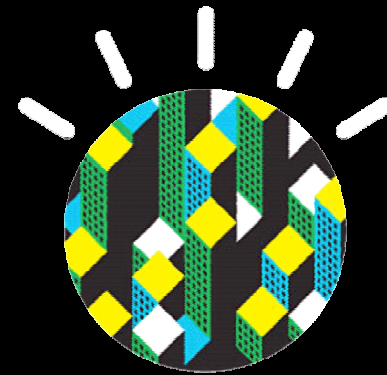
**Services**

citizens and governments expect of us?.

How do we

**ADAPT**

to the challenges of the 21<sup>st</sup> Century?



What can we **DO?**