

Urban Forestry

Planting & Maintaining Trees:
Growing Communities
Sustaining Lifestyles



Tempe

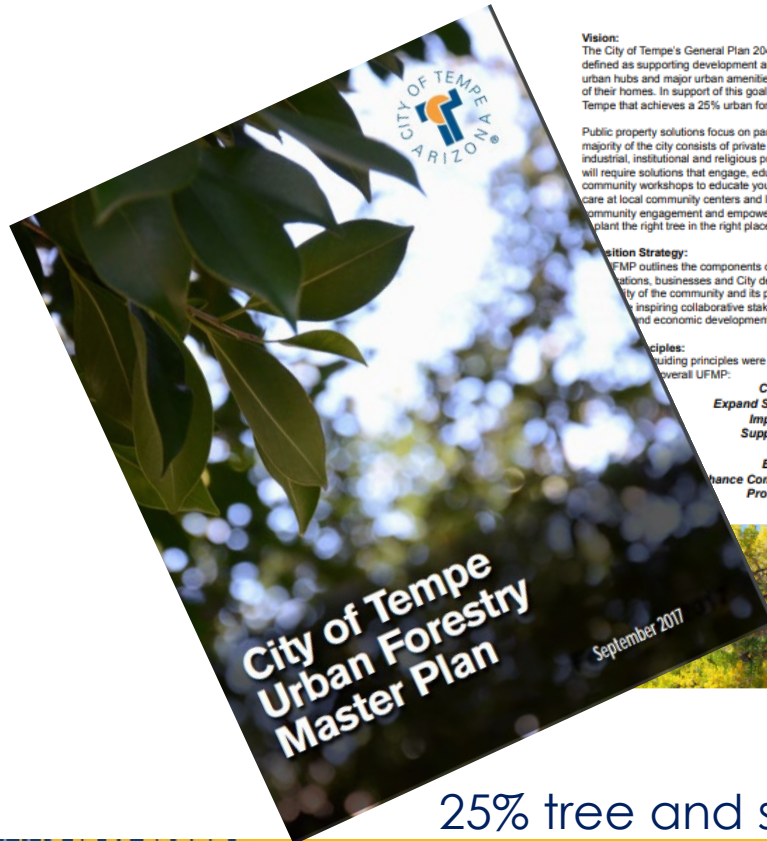
Making waves in the desert

What is the Urban Forest in the Desert Southwest?



- The collection of trees growing with our city.
- All vegetation, public and private.
- The human - forest interface.
- A component of green infrastructure.
- A keystone for urban living.

COT UFMP



Vision:
The City of Tempe's General Plan 2040 includes the goal of becoming a 20-Minute City. This is defined as supporting development and land use where residents can comfortably walk or bike to urban hubs and major urban amenities, such as grocery stores, services and transit within 20 minutes of their homes. In support of this goal, the UFMP vision is to establish a green, cool and healthy Tempe that achieves a 25% urban forest tree canopy by 2040.

Public property solutions focus on parks and open space, streets, and urban hubs. However, the majority of the city consists of private properties (homes, businesses, retail, office) along with industrial, institutional and religious properties. Increasing the tree canopy on non-city properties will require solutions that engage, educate and empower the community. This includes developing community workshops to educate youth and adult community members about tree planting and care at local community centers and libraries, creating new and expanding existing programs for community engagement and empowerment and providing services to guide businesses and residents to plant the right tree in the right place.

Position Strategy:

UFMP outlines the components of an integrated approach for engaging residents, community organizations, businesses and City departments to sustain an urban forest that supports the health and quality of the community and its public spaces. Improving city expenditure on tree planting and inspiring collaborative stakeholder action can create a 20-Minute City that benefits public and economic development.

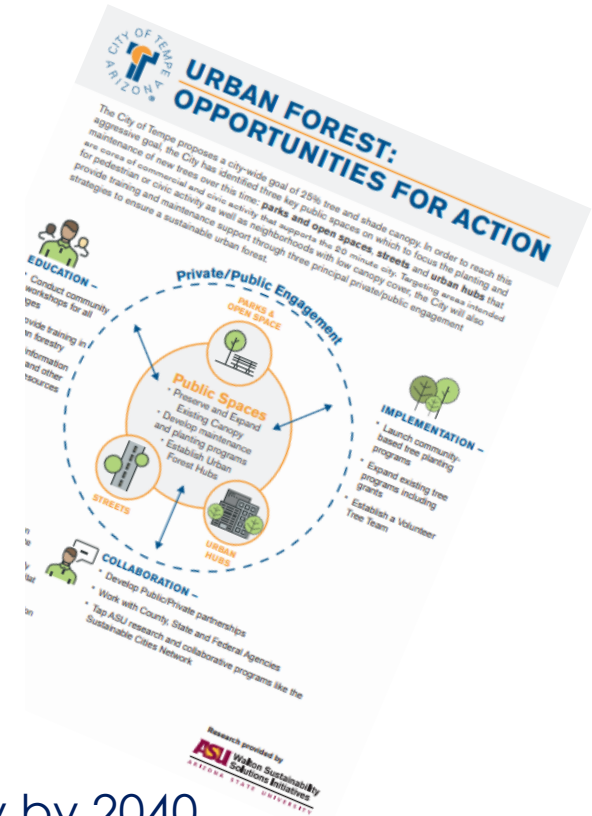
Principles:

Guiding principles were established to support the vision of a green, cool and healthy overall UFMP:

- Cultivate Collective Action
- Expand Shade to Maximize Urban Cooling
- Improve Walkability Equitably
- Support Biodiversity and Habitat
- Use Resources Wisely
- Enhance Property Values
- Enhance Community Beautification and Livability
- Promote a Healthy Community
- Right Tree, Right Place



City of Tempe Urban Forestry Master Plan



25% tree and shade canopy by 2040

Tempe Tree Programs



- Urban Forest Master Plan
- Climate Action Plan
- Maryanne Corder Neighborhood Grants
- Carbon Offset plantings
- Tree City USA (24th year)
- Tree Cities of The World



A programme of:



Tempe Tree Numbers



- 29,000 trees:
 - Park/facilities ~19,000
 - ROW/Trails ~10,000
 - Over 100 species and varieties.
- 13.6 % canopy cover citywide
- \$57.6M value.
- \$1.2M in annual benefits
- Top ten species:

| | Top 10 Species |
|--|-------------------------|
| | 7.57% VELVET MESQUITE |
| | 6.45% CHILEAN MESQUITE |
| | 5.49% YELLOW PALO VERDE |
| | 4.85% MEXICAN FAN PALM |
| | 4.38% INDIAN ROSEWOOD |
| | 4.32% CHINESE ELM |
| | 4.30% SOUTHERN LIVE OAK |
| | 3.64% SAGUARO CACTUS |
| | 3.08% BLUE PALO VERDE |
| | 2.98% ALEPPO PINE |
| | 52.93% OTHER |

Urban Forest Canopy



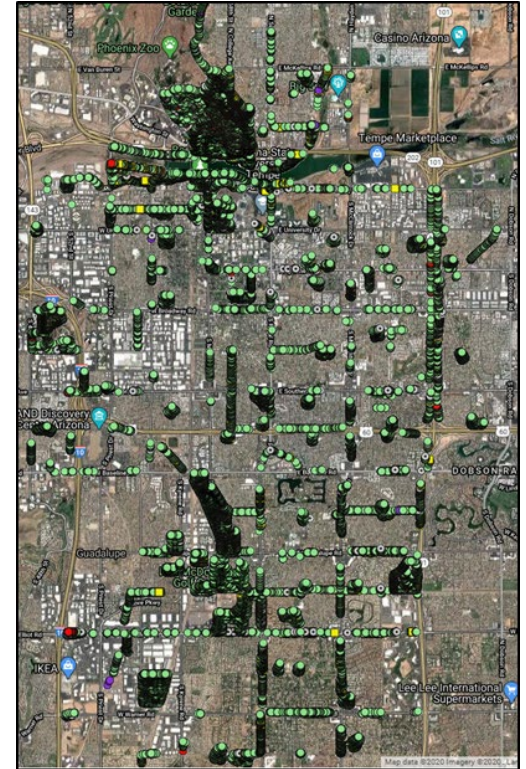
- Plant new and protect mature.
- Establish maintenance program/budget.
- Right Tree for the Right Place.
- Planning and Development partnership.

Diversity
Sustainability

Tree Inventory/Assessment



- A record of the location, characteristics, and assessment of individual trees over a well-defined area.
- Most inventories use GPS/GIS technology.
- Data dependent on budget.
- Information collected:
 - Species, Diameter, Condition, Maintenance, Notes.



Urban Forest Management Plan



- Formulates, establishes guidelines and documents the strategies and procedures for managing the trees within a jurisdictional area.
- Defines goals and objectives.
- Identifies stakeholders.
- Many parts and components.

UFMP should include:



- Planting plan
- Preservation plan
- Maintenance plan
- Removal and replacement plan
- Risk management plan
- Operations plan
- Storm response/emergency plan
- PR/education plan

Risk Management

- Liability versus Asset.
- Identify, assess, mitigate.
- Frequency of assessment.
- Record keeping protocol.
- Reporting structure.



Information and Education



- Public Relations
- Communication
- Partnerships
- Educational programming

Informed residents and policy makers

Citizen Forester Program



- Benefits and values of tree for the community.
- Species selection and installation.
- Basic plant biology and ecology.
- Young tree care.
- Proper pruning techniques.
- Event organization and safety.

Richard Adkins

Urban Forester City of Tempe

Richard_Adkins@tempe.gov

480.350.5227

